



### UNIVERSITY OF LATVIA

Erasmus code	<b>LV RIGA01</b>
PIC	999871830
Address	Raina Blvd. 19, Riga, LV-1586, Latvia
Website	<a href="https://www.lu.lv/en/">https://www.lu.lv/en/</a>
<b>Rector</b>	<b>Professor Indrikis MUIZNIEKS</b>

### INTERNATIONAL RELATIONS

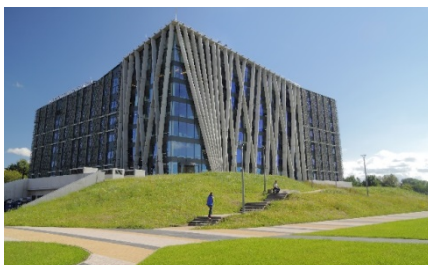
Address	Raina Blvd. 19, Riga, LV-1586, Latvia
Website	<a href="https://www.lu.lv/en/admission/for-international-students/exchange/contacts/">https://www.lu.lv/en/admission/for-international-students/exchange/contacts/</a>
<b>Erasmus Institutional Coordinator</b>	<b>Mrs. Aline GRZIBOVSKA</b>
Phone	+371 6703 3997
Fax	+371 6722 5039
E-mail	<a href="mailto:ad@lu.lv">ad@lu.lv</a>
<b>Head of Mobility Division</b>	<b>Ms. Sintija MACULEVICA</b>
Phone	+371 6703 3968
E-mail	<a href="mailto:sintija.maculevica@lu.lv">sintija.maculevica@lu.lv</a>
<b>Contact person for outgoing students</b>	<b>Ms. Marta VILKAUSA</b>
Phone	+371 6703 4406
E-mail	<a href="mailto:marta.vilkausa@lu.lv">marta.vilkausa@lu.lv</a>
<b>Contact person for incoming students</b>	<b>Ms. Liene MEINHARDE</b>
Phone	+371 6703 4350
E-mail	<a href="mailto:liene.meinharde@lu.lv">liene.meinharde@lu.lv</a>
<b>Contact person for incoming students (from non EU countries)</b>	<b>Ms. Aleksandra KJAKSTE</b>
Phone	+371 6703 4336
E-mail	<a href="mailto:aleksandra.kjakste@lu.lv">aleksandra.kjakste@lu.lv</a>
<b>Contact person for IIA Erasmus+ agreements with Programme Countries</b>	<b>Ms. Marta VILKAUSA</b>
Phone	+371 6703 4406
E-mail	<a href="mailto:marta.vilkausa@lu.lv">marta.vilkausa@lu.lv</a>
<b>Contact person for IIA Erasmus+ agreements with Partner Countries</b>	<b>Ms. Aleksandra KJAKSTE</b>
Phone	+371 6703 4336
E-mail	<a href="mailto:aleksandra.kjakste@lu.lv">aleksandra.kjakste@lu.lv</a>



INFORMATION FOR INTERNATIONAL STUDENTS	
<b>Academic calendar 2022/2023</b>	
<b>Autumn semester</b>	
<i>registration week</i>	29.08.2022 - 04.09.2022
<i>studies</i>	05.09.2022 - 23.12.2022
<i>Christmas and New Year holidays</i>	24.12.2022 - 01.01.2023
<i>individual studies and exams</i>	02.01.2023 - 27.01.2023
<b>Spring semester</b>	
<i>registration week</i>	31.01.2023 - 05.02.2023
<i>studies</i>	06.02.2023 - 02.04.2023
<i>Easter holidays</i>	03.04.2023 - 10.04.2023
<i>studies</i>	11.04.2023 – 04.06.2023
<i>individual studies and exams</i>	05.06.2023 - 02.07.2023
Website	<a href="https://www.lu.lv/en/studies/study-process/academic-calendar/">https://www.lu.lv/en/studies/study-process/academic-calendar/</a>
Application deadlines	Autumn Spring May 15 <sup>th</sup> November 15 <sup>th</sup>
Nomination deadlines (by e-mail <a href="mailto:exchange@lu.lv">exchange@lu.lv</a> )	Autumn Spring April 15 <sup>th</sup> October 15 <sup>th</sup>
Language of instructions	The official language of instruction is Latvian. Courses for international students are offered in English.
Language requirements	<b><u>English B1</u></b>  Students applying for the following faculties have additional language requirements:  <b>Faculty of Humanities</b>  <i>Bachelor level programmes:</i> English philology (English B2) Modern Languages and Business Studies (English B2) French philology (French, Italian or Spanish B1) German philology (German B1) Russian philology (Russian B2)  <i>Master level programmes:</i> English philology (English B2) Romance studies (French, Italian or Spanish B2) German philology (German B2) Russian philology (Russian B2) Translation "Latvian-English-Russian" studies - English B2 and Russian B2



	<b>Faculty of Education, Psychology and Art</b> Psychology (English B2)  <b>Faculty of Medicine</b> Medicine and Dentistry programmes: English B2
Application information for incoming students	<a href="https://www.lu.lv/en/admissions/exchange-studies/">https://www.lu.lv/en/admissions/exchange-studies/</a>
Accommodation information	<a href="https://www.lu.lv/en/studies/student-life/accommodation/">https://www.lu.lv/en/studies/student-life/accommodation/</a>
Courses for incoming students	<a href="https://www.lu.lv/en/gribustudet/arzemju-studentiem-eng/exchange/courses/">https://www.lu.lv/en/gribustudet/arzemju-studentiem-eng/exchange/courses/</a>
Immigration information	<a href="https://www.lu.lv/en/gribustudet/arzemju-studentiem-eng/exchange/visas/">https://www.lu.lv/en/gribustudet/arzemju-studentiem-eng/exchange/visas/</a>
General and Practical information for incoming students	<a href="https://www.lu.lv/en/admission/for-international-students/degree/advice/">https://www.lu.lv/en/admission/for-international-students/degree/advice/</a>
Credit points	1 Latvian credit point = 1.5 ECTS
Approx. expenses per month	
Accommodation	100 – 300 EUR
Food & drinks	300 EUR
Books	20 EUR
Local Transportation	30 EUR
<i>Total</i>	<i>450 – 650 EUR</i>





**INTERNATIONAL COORDINATORS AT FACULTIES**

<b>FACULTY OF BIOLOGY</b>	
Departmental Coordinator	<b>Assoc. prof. Liga OZOLINA-MOLLA</b>
E-mail	<a href="mailto:liga.ozolina-molla@lu.lv">liga.ozolina-molla@lu.lv</a>
<b>FACULTY OF CHEMISTRY</b>	
Departmental Coordinator	<b>Doc. Agnese OSITE</b>
E-mail	<a href="mailto:agnese.osite@lu.lv">agnese.osite@lu.lv</a>
<b>FACULTY OF COMPUTING</b>	
Departmental Coordinator	<b>Asoc. prof. Zane BICEVSKA</b>
E-mail	<a href="mailto:zane.bicevska@lu.lv">zane.bicevska@lu.lv</a>
<b>FACULTY OF BUSINESS, MANAGEMENT AND ECONOMICS</b>	
Departmental Coordinator	<b>Ms. Agne Ellere</b>
E-mail	<a href="mailto:agne.ellere@lu.lv">agne.ellere@lu.lv</a>
<b>FACULTY OF EDUCATION, PSYCHOLOGY AND ART</b>	
Departmental Coordinator	<b>Ms. Alise Olesika</b>
E-mail	<a href="mailto:alise.olesika@lu.lv">alise.olesika@lu.lv</a>
<b>FACULTY OF GEOGRAPHY AND EARTH SCIENCES</b>	
Departmental Coordinator	<b>Prof. Zaiga KRISJANE</b>
E-mail	<a href="mailto:zaiga.krisjane@lu.lv">zaiga.krisjane@lu.lv</a>
<b>FACULTY OF HISTORY AND PHILOSOPHY</b>	
Departmental Coordinator	<b>Dr. Artis SVECE</b>
E-mail	<a href="mailto:artis.svece@lu.lv">artis.svece@lu.lv</a>



**INTERNATIONAL COORDINATORS AT FACULTIES**

<b>FACULTY OF HUMANITIES</b>	
Departmental Coordinator	<b>Ms. Jekaterina CERNEVSKA</b>
E-mail	<a href="mailto:jekaterina.cernevska@lu.lv">jekaterina.cernevska@lu.lv</a>
<b>FACULTY OF LAW</b>	
Departmental Coordinator	<b>Ms. Daina ANDREJEVA</b>
E-mail	<a href="mailto:daina.andrejeva@lu.lv">daina.andrejeva@lu.lv</a>
<b>FACULTY OF MEDICINE</b>	
Departmental Coordinator	<b>Mr. Ivars PEKAINIS</b>
E-mail	<a href="mailto:ivars.pekainis@lu.lv">ivars.pekainis@lu.lv</a>
<b>FACULTY OF PHYSICS, MATHEMATICS AND OPTHOMETRY</b>	
Departmental Coordinator, Coordinator for Department of <b>Physics</b>	<b>Doc. Imants Kaldre</b>
E-mail	<a href="mailto:imants.kaldre@lu.lv">imants.kaldre@lu.lv</a>
Coordinator for Department of <b>Mathematics</b>	<b>Doc. Olga Grigorenko</b>
E-mail	<a href="mailto:olga.grigorenko@lu.lv">olga.grigorenko@lu.lv</a>
Coordinator for Department of <b>Optometry</b>	<b>Dace Rutkovska</b>
E-mail	<a href="mailto:dace.ruktovska@lu.lv">dace.ruktovska@lu.lv</a>
<b>FACULTY OF SOCIAL SCIENCES</b>	
Departmental Coordinator:	<b>Ms. Aleksandra KJAKSTE</b>
E-mail	<a href="mailto:aleksandra.kjakste@lu.lv">aleksandra.kjakste@lu.lv</a>
<b>FACULTY OF THEOLOGY</b>	
Departmental Coordinator	<b>Doc. Janis RUDZITIS-NEIMANIS</b>
E-mail	<a href="mailto:janis.rudzitis@lu.lv">janis.rudzitis@lu.lv</a>