



FACT SHEET 2025

UNIVERSIDAD ABIERTA INTERAMERICANA



About us



Location

The UAI is located in the cities of Buenos Aires and Rosario, Argentina.



Website

<https://uai.edu.ar/>



Faculties & schools

<https://uai.edu.ar/facultades/>





Contact Information

Universidad Abierta Interamericana
Chacabuco 90 3er Piso (CP 1069AAB)
Ciudad Autónoma de Buenos Aires - Argentina
(+54) 11 - 4342 7788



Lic. Ezequiel Mateo Martinich

ezequiel.martinich@ai.edu.ar

Secretary of
Institutional Relations



Lic. Lucía Inés Villoldo

lucia.villoldo@uai.edu.ar

Assistant
International Cooperation Department



**INTERNATIONAL
COOPERATION
DEPARTMENT**

UAI

Office Hours: Monday through Friday 8 am to 5 pm.



Nomination and Admission Procedure

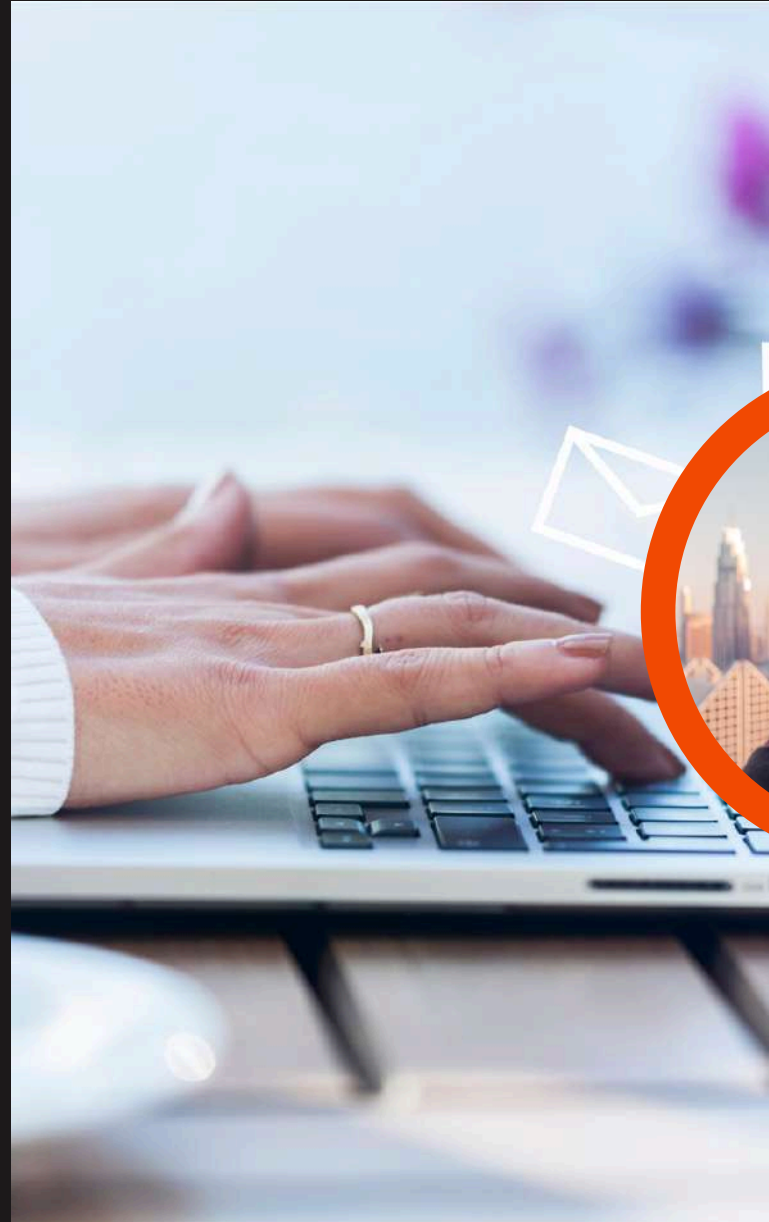


1. Nomination by home institution (Student's application will only be accepted if they have been officially nominated by the home Institution prior to application at the host institution).
2. Student: will receive information on registration and application.
3. After application approval, the **International Cooperation Department** will send a "Letter of Acceptance" to the student.

Deadlines

1st Semester 15th February.

2nd Semester 15th June.



→ **Application documents**

1. Learning agreement signed by the student and the Academic Coordinator at home university.
2. Transcript of records.
3. A photocopy of the student's passport or ID.
4. A copy of the student's Secondary School / High School diploma.
5. Araucano Form.



Academic Information for your Learning Agreement

- **Pre-selection of Courses**

Prepare your Learning Agreement with your local coordinator.

The UAI follows an open policy, meaning that exchange students can take courses from different study programs.

Check with the ICD and Director of Courses at UAI which course modality you want to choose, since there are in-person, hybrid and 100% virtual courses.

- **Courses Catalogue**

<https://uai.edu.ar/facultades/>

- **Language of Instruction**

Subjects are taught in Spanish. Students from countries whose native language is not Spanish are recommended to have a B2 level of Spanish.

They will be asked to prove their level of Spanish with an international certificate (see the list at ICD at UAI) or attend the Spanish exam before the beginning of the semester at the UAI.