

STUDY EXCHANGE AT NTU

INCOMING EXCHANGE MODULES FOR 2025/26 INTAKE



Learn



Connect



Explore

Please see below the modules that may be available to you as incoming exchange students - these modules were offered for the 2024/25 academic year and so may be subject to change. Modules are usually taken from our Year 2 course offer.

Contents

Instructions	2
Glossary of Terms	3
School of Art and Design	4
Full Year Modules	4
Semester One Modules (September to January):	12
Semester Two Modules (January to May):	18
School of Architecture, Design and the Built Environment	21
Semester One Modules (September to January):	23
Semester Two Modules (January to May):	24
School of Arts and Humanities	25
Semester One Modules (September to January):	25
Semester Two Modules (January to May):	27
School of Animal, Rural and Environmental Sciences	29
Full Year Modules	29
Semester One Modules (September to January) for Animal Studies:	29
Semester Two Modules (January to May) for Animal Studies:	30
Semester One Modules (September to January) for Equine Studies:	30
Semester Two Modules (January to May) for Equine Studies:	30
Semester One Modules (September to January) for Environmental Sciences:	31
Semester Two Modules (January to May) for Environmental Sciences:	31
Semester One Modules (September to January) for Geography:	32
Semester Two Modules (January to May) for Geography:	32
Nottingham Business School	33
Full Academic Year Modules:	33
Semester One Modules	34
Semester Two Modules	34
Semester Two Mixed Modules (January to May):	37
Nottingham Law School	39

Full Academic Year Modules:.....	39
Semester One Modules (September to January):.....	41
Semester Two Modules (January to May):	42
School of Science and Technology	42
Full Academic Year Modules:.....	43
Semester One Modules (September to January) for Maths:.....	50
Semester Two Modules (January to May) for Maths:	51
Full Year Modules for Maths:.....	51
School of Social Sciences	56
Semester One Modules (September to January):.....	60
Semester Two Modules (January to May):	62
Nottingham Institute of Education	65
Semester One Modules (September to January):.....	65
Semester Two Modules (January to May):	66

Instructions

Please find your NTU School and course below and look carefully at the modules available to you. Please check if the module is compulsory or optional, how many credits it is worth, and if it is a semester 1, semester 2, or full-year module.

How many modules can I choose? Students studying with us for one semester are required to take 60 cps, and students coming to us for a full year are required to take 120 cps.

Compulsory modules - are modules that you must take as part of your exchange with us. You can choose from the optional modules if needed to make your credit points up to 60 (one semester) or 120 (full-academic year).

Please note:

- it is not possible to choose modules from across different Schools
- it is not possible to change modules after the start of the semester.
- module selection is subject to availability and timetabling considerations

Please consider your choices very carefully and ensure that they are validated by your co-ordinator before you arrive in Nottingham.

Where can I find more information about the modules available to me? Module descriptions are available on our website – you can search by course, and then click on the ‘what you’ll study’ link. Exchange students usually study our Year 2 (Level 5) modules. You can also contact your [NTU School to](#) request module specifications.

Glossary of Terms

Exchange: spending a semester or full academic year at NTU as part of a degree programme in your home country. You do not pay tuition fees to study with us.

Course: not to be confused with a 'class' or 'module'. A course refers to a structured programme of study that leads to an academic qualification. Comparable to a 'major' in some countries.

Module: You may describe this as one course or class.

Credits: Credits are a value given to each module on successful completion. You'll select 60 credits per semester and 120 credits for a full academic year. 10 UK credits = 5 ECTS.

Semester: Semester 1 runs from September–January and Semester 2 from January–May. You are expected to be present in Nottingham for all assessments. Students from non-EU partners may be able to return home in December and undertake 'Alternative Assessments' to complete their studies early.

Year: This is the level of the module for example Year 2 means the second year of an undergraduate degree. The first number of each module code correlates to the Stage.

Level: Year 1 = Level 4 / Year 2 = Level 5 / Year 3 = Level 6

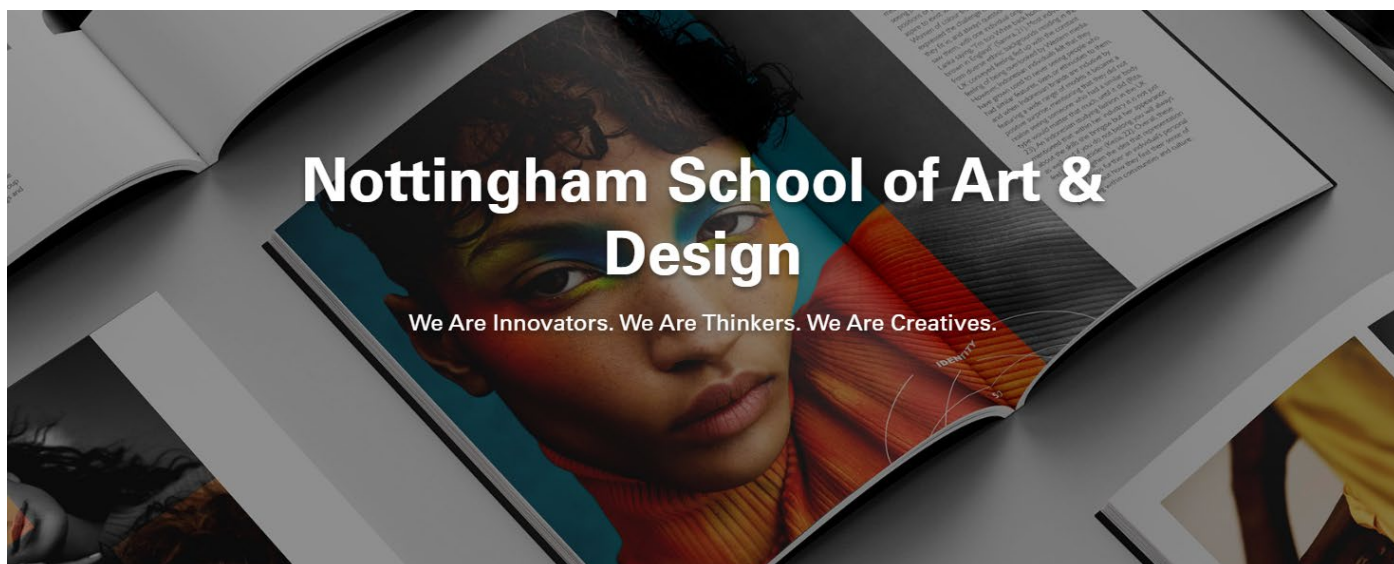
Pre-requisite: Year 2 modules are likely to require any student studying them to have prior experience in the subject field. You will need to show you have met these pre-requisites in order to be given permission to study these modules.

Mobility Online: This is our application portal where you complete and submit your application to study on exchange at NTU. We will send you a link to access Mobility Online when we are ready for you to start your application.

Academic Transcript: this is an official university document that lists the classes/modules/courses you have taken. We will ask to see a transcript from your home institution as part of the application process. You will need to provide a certified English translation if your transcript is provided in another language.

School: in some countries, the terms 'university', 'college' and 'school' are synonymous. In the UK, a university is divided into schools which focus on a specific area of academic study

School of Art and Design



The Design & Digital Arts building

Our new Design & Digital Arts building will place Nottingham as a UK hub for film, television, animation, UX design, games design, graphic design and more.

[Explore our new Design & Digital Arts building](#)



Full Year Modules

Course	Qualification level	Semester	Module Title	NTU Credits
BA (H) Animation (NTAD115)	5	2	Animation Production – Compulsory	40
	5	1	Animation Studio - Compulsory	40
	5	2	CoLab: Research, Exploration and Risk-taking – Compulsory	20
		Please choose one of the following optional semester one modules:		
	5	1	Storyboarding	20
	5	1	Character Ideation	20
	5	1	Experimental Animation	20
	5	1	Telling Stories	20
	5	1	Motion Graphics	20
	5	1	Open-Source 3D Art	20
	5	1	Digital Matte Painting	20
	5	1	Performance for Motion Capture	20
BA (H) Costume Design and Construction (VAPA0033)	5	1	Costume Direction – Compulsory	40
	5	2	Costume Exploration – Compulsory	40
	5	2	CoLab: Research, Exploration and Risk-taking – Compulsory	20

		Please choose one of the following optional semester one modules:		
	5	1	Slow Making and Craftsmanship	20
	5	1	Millinery: Object and Narrative	20
	5	1	Character Ideation	20
	5	1	Prop Making	20
	5	1	Fashion Photography: Cover Shoot	20
	5	1	Tabletop Game Development	20
	5	1	Virtual Production	20
	5	1	Interactive Narrative	20
BA (H) Creative Direction and Curation for Fashion (FTEX015)	5	1	Curate and Create for Fashion – Compulsory	40
	5	2	Direct and Produce for Fashion – Compulsory	40
	5	2	CoLab Research, Exploration and Risk-taking – Compulsory	20
	5	Please choose one of the following optional semester one modules:		
	5	1	Publishing: Experimental Formats	20
	5	1	Telling Stories	20
	5	1	Responding to the Visual World	20
	5	1	Creative Live Event Production	20
	5	1	Web3 & Creative Autonomy	20
	5	1	Fashion Styling	20
	5	1	Virtual Production	20
	5	1	Music Video	20
BA (H) Design for Film and Television (VAPA026)	5	1	Industry Craft and Context – Compulsory	40
	5	2	Advanced Skills and Concepts – Compulsory	40
	5	2	CoLab Research, Exploration and Risk-taking - Compulsory	20
		Please choose one of the following optional semester one modules:		
	5	1	Storyboarding	20
	5	1	Character Ideation	20
	5	1	Digital Matte Painting	20
	5	1	Model Making: Object and Narrative	20
	5	1	Experimental Animation	20
	5	1	Music Video	20
	5	1	Virtual Production	20
	5	1	Prop Making	20
BA (H) Design for Theatre and Live Performance (VAPA037)	5	1	Audience and Live Practice – Compulsory	40
	5	2	Exploration and innovation – Compulsory	40
	5	2	CoLab Research, Exploration and Risk-taking - Compulsory	20
		Please choose one of the following optional semester one modules:		
	5	1	Storyboarding	20
	5	1	Millinery: Object and Narrative	20
	5	1	Performance for Motion Capture	20
	5	1	3D Materials and Exploration	20
	5	1	Model Making: Object and Narrative	20

	5	1	Virtual Production	20
	5	1	Prop Making	20
	5	1	Live Art / Collisions	20
BA (H) Fashion Communication and Promotion (FTEX015)	5	1	Agency of the Future - Compulsory	40
	5	2	Critical Fashion Journalism - Compulsory	20
	5	2	Fashion Futures - Compulsory	20
	5	2	CoLab Research, Exploration and Risk-taking - Compulsory	20
	Please choose one of the following optional semester one modules:			
	5	1	Trend Forecasting	20
	5	1	Digital Marketing and Communication	20
	5	1	Creative Live Event Production	20
	5	1	Web3 and Creative Autonomy	20
	5	1	Beauty Industry: Innovation to Impact	20
	5	1	Buying, Merchandising and Product Fundamentals	20
	5	1	Fashion Styling	20
	5	1	Fashion Photography: Cover Shoot	20
BA (H) Fashion Design (FTEX002)	5	1	Directions: Industry and Context for Fashion Design – Compulsory	40
	5	2	Directions: Innovation and Transition for Fashion Design – Compulsory	40
	5	2	CoLab Research, Exploration and Risk-taking - Compulsory	20
	Please choose one of the following optional semester one modules:			
	5	1	Slow Making and Craftsmanship	20
	5	1	Millinery: Object and Narrative	20
	5	1	Trend Forecasting	20
	5	1	Web3 and Creative Autonomy	20
	5	1	Drawing & Exploring with Natural Materials	20
	5	1	Fashion Styling	20
	5	1	Virtual Production	20
	5	1	Prop Making	20
BA (H) Fashion Knitwear Design and Knitted Textiles FT (FTEX011)	5	1	Directions: Industry and Context for Fashion Knitwear Design and Knitted Textiles - Compulsory	40
	5	2	Directions: Innovation and Transition for Fashion Knitwear Design and Knitted Textiles - Compulsory	40
	5	2	CoLab Research, Exploration and Risk-taking - Compulsory	20
	Please choose one of the following optional semester one modules:			
	5	1	Slow Making and Craftsmanship	20
	5	1	Trend Forecasting	20
	5	1	Buying, Merchandising and Product Fundamentals	20
	5	1	Web3 and Creative Autonomy	20

	5	1	Drawing & Exploring with Natural Materials	20
	5	1	Fashion Styling	20
	5	1	Virtual Production	20
	5	1	Prop Making	20
BA (H) Fashion Management FT/SW (FTEX018/19)	5	1	Buying, Merchandising and Product Management – Compulsory	20
	5	1	Global Sourcing & Sustainability - Compulsory	20
	5	2	Buying, Merchandising and Product Management – Compulsory	20
	5	2	Global Sourcing & Sustainability - Compulsory	20
	5	2	CoLab Research, Exploration and Risk-taking - Compulsory	20
	5	Please choose one of the following optional semester one modules:		
	5	1	Fashion Product Marketing	20
	5	1	Web3 & Creative Autonomy	20
	5	1	Responding to the Visual World	20
	5	1	Digital Marketing and Communication	20
	5	1	Creative Entrepreneurship	20
	5	1	Creative Live Event Production	20
	5	1	Fashion Photography: Cover Shoot	20
	5	1	Fashion Styling	20
BA (H) Fashion Marketing and Branding (FTEX016)	5	1	Marketing Strategy and Insight – Compulsory	40
	5	2	Brand Environments - Compulsory	40
	5	2	CoLab Research, Exploration and Risk-taking - Compulsory	20
		Please choose one of the following optional semester one modules:		
	5	1	Trend Forecasting	20
	5	1	Buying, Merchandising and Product Fundamentals	20
	5	1	Digital Marketing and Communication	20
	5	1	Creative Live Event Production	20
	5	1	Web3 and Creative Autonomy	20
	5	1	Beauty Industry: Innovation to Impact	20
BA (H) Fashion Photography (VAPA039)	5	1	Fashion Lab – Compulsory	40
	5	2	Fashion Assignments – Compulsory	40
	5	2	CoLab Research, Exploration and Risk-taking - Compulsory	20
		Please choose one of the following optional semester one modules:		
	5	1	Publishing: Experimental Formats	20

	5	1	Telling Stories	20
	5	1	Digital Marketing & Communication	20
	5	1	Music Video	20
	5	1	Beauty Industry: Innovation to Impact	20
	5	1	Live Art / Collisions	20
	5	1	Fashion Styling	20
	5	1	Virtual Production	20
BSc (H) Film Technology (DESN113)	5	1	Advanced Production – Compulsory	40
	5	2	Emerging Technologies – Compulsory	40
	5	2	CoLab Research, Exploration and Risk-taking – Compulsory	20
	Please choose one of the following optional semester one modules:			
	5	1	Storyboarding	20
	5	1	Motion Graphics	20
	5	1	Digital Matte Painting	20
	5	1	Music Video	20
	5	1	Sound Art and Design	20
	5	1	Fashion Photography: Cover Shoot	20
	5	1	Virtual Production	20
	5	1	Prop Making	20
BA (H) Filmmaking (NTAD149)	5	1	Film Production 1 - Compulsory	40
	5	2	Film Production 2 - Compulsory	40
	5	2	Co Lab: Research, Exploration and Risk-taking - Compulsory	20
	Please choose one of the following optional semester one modules:			
	5	1	Storyboarding	20
	5	1	Motion Graphics	20
	5	1	Responding to the Visual World	20
	5	1	Digital Matte Painting	20
	5	1	Music Video	20
	5	1	Sound Art and Design	20
BA (H) Fine Art (VAPA003)	5	1	Speculation: Staging Fine Art Practice - Compulsory	30
	5	1	Writing Contemporary Art: Analysis - Compulsory	10
	5	2	Speculation: Staging Fine Art Practice - Compulsory	30
	5	2	Writing Contemporary Art: Analysis - Compulsory	10
	5	2	Co Lab Research, Exploration and Risk-taking - Compulsory	20
	Please choose one of the following optional semester one modules:			
	5	1	Live Art/ Collisions	20

	5	1	Ecological futures: A creative response	20
	5	1	Drawing and exploring with natural materials	20
	5	1	Model Making: object and narrative	20
	5	1	Virtual Production	20
	5	1	Experimental Animation	20
	5	1	Responding to the Visual World	20
	5	1	Slow Making and Craftmanship	20
BA (H) Graphic Design (DESN005)	5	1	Exploring the Graphic Design Industry - Compulsory	30
	5	1	Design in Context - Compulsory	10
	5	2	Exploring the Graphic Design Industry - Compulsory	30
	5	2	Design in Context - Compulsory	10
	5	2	Co Lab: Research, Exploration and Risk-taking - Compulsory	20
	Please choose one of the following optional semester one modules:			
	5	1	Drawing and Exploring with Natural Materials	20
	5	1	Publishing: Experimental Formats	20
	5	1	Typography: Use and Expression	20
	5	1	Telling Stories	20
	5	1	Motion Graphics	20
	5	1	Ethical Design	20
	5	1	Digital Marketing and Communication	20
	5	1	Exploring Creative Coding	20
BA (H) Illustration (DESN100)	5	1	Professional Context and Personal Direction - Compulsory	30
	5	1	Contemporary Issues in Illustration - Compulsory	10
	5	2	Professional Context and Personal Direction - Compulsory	30
	5	2	Contemporary Issues in Illustration - Compulsory	10
	5	2	Co Lab: Research, Exploration and Risk-taking - Compulsory	20
	Please choose one of the following optional semester one modules:			
	5	1	Storyboarding	20
	5	1	Experimental Animation	20
	5	1	Publishing: Experimental Formats	20
	5	1	Typography: Use and Expression	20
	5	1	Telling Stories	20
	5	1	Exploring Creative Coding	20
	5	1	Drawing and Exploring with Natural Materials	20
	5	1	Ecological Futures: A Creative Response	20
	5	1	Prop Making	20
	5	1	Photography and the World - Compulsory	40

BA (H) Photography (VAPA004)	5	2	Live Assignments - Compulsory	40
	5	2	Co Lab: Research, Exploration and Risk-taking - Compulsory	20
		Please choose one of the following optional semester one modules:		
	5	1	Publishing: Experimental Formats	20
	5	1	Typography: Use and Expression	20
	5	1	Digital Marketing and Communication	20
	5	1	Music Video	20
	5	1	Sound Art and Design	20
	5	1	Live Art / Collisions	20
	5	1	Drawing & Exploring with Natural Materials	20
	5	1	Virtual Production	20
BA (H) Games Art (DESN109)		Please choose one of the following semester one modules:		
	5	1	Progressing 2D Digital Art	40
	5	1	Progressing 3D Digital Art	40
	5	2	Games Art Studio – Compulsory	40
	5	2	Co Lab Research, Exploration and Risk-taking - Compulsory	20
		Please choose one of the following optional semester one modules:		
	5	1	Storyboarding	20
	5	1	Character Ideation	20
	5	1	Experimental Animation	20
	5	1	Performance for Motion Capture	20
	5	1	Tabletop Game Development	20
	5	1	Interactive Narrative	20
	5	1	Virtual Production	20
	5	1	Prop Making	20
BSc (H) Games Design (DESN111)	5	1	System and Level Design – Compulsory	40
	5	2	Games Design Studio – Compulsory	40
	5	2	Co Lab Research, Exploration and Risk-taking – Compulsory	20
		Please choose one of the following optional semester one modules:		
	5	1	3D Materials and exploration	20
	5	1	Storyboarding	20
	5	1	Exploring Creative Coding	20
	5	1	Performance for Motion Capture	20
	5	1	Sound Art and Design	20
	5	1	Open-source 3D Art	20
	5	1	Interactive Narrative	20
	5	1	Tabletop Game Development	20
BA (H) Motion Graphics (DESN0105)	5	1	Motion Graphics in Context – Compulsory	10
	5	1	Exploring Motion Graphics – Compulsory	30
	5	2	Motion Graphics in Context – Compulsory	10
	5	2	Exploring Motion Graphics – Compulsory	30

	5	2	Co Lab Research, Exploration and Risk-taking – Compulsory	20
	Please choose one of the following optional semester one modules:			
	5	1	Publishing : Experimental Formats	20
	5	1	Typography : Use and Expression	20
	5	1	Digital Marketing and Communication	20
	5	1	Exploring Creative Coding	20
	5	1	Music Video	20
	5	1	Open-source 3D Art	20
	5	1	Virtual Production	20
	5	1	Model Making : Object and Narrative	20
BA (H) Sports Photography (VAPA041)	5	1	Experimental Sports – Compulsory	40
	5	2	Live Sports Assignments – Compulsory	40
	5	2	Co Lab Research, Exploration and Risk-taking – Compulsory	20
	Please choose one of the following optional semester one modules:			
	5	1	Ethical Design	20
	5	1	Digital Marketing and Communication	20
	5	1	Telling Stories	20
	5	1	Performance for Motion Capture	20
	5	1	Music Video	20
	5	1	Virtual Production	20
	5	1	Interactive Narrative	20
	5	1	Open-Source 3D Art	20
BA (H) Textile Design (FTEX007)	5	1	Directions: Industry and Context for Textile Design – Compulsory	40
	5	2	Directions: Innovation and Transition for Textile Design – Compulsory	40
	5	2	Co Lab Research, Exploration and Risk-taking – Compulsory	20
	Please choose one of the following optional semester one modules:			
	5	1	Slow Making and Craftsmanship	20
	5	1	3D Materials and Exploration	20
	5	1	Trend Forecasting	20
	5	1	Buying, Merchandising and Product Fundamentals	20
	5	1	Creative Entrepreneurship	20
	5	1	Drawing and Exploring with Natural Materials	20
	5	1	Ecological Futures: A Creative Response	20
	5	1	Fashion Styling	20
BA (H) Visual Effects Art (DESN107)	Please choose one of the following 2 semester one modules:			
	5	1	Progressing VFX Compositing	40
	5	1	Progressing 3D Digital Art	40
	5	2	Visual Effects Art Studio – Compulsory	40
	5	2	Co Lab Research, Exploration and Risk-taking – Compulsory	20

	Please choose one of the following optional semester one modules:		
5	1	Storyboarding	20
5	1	Character Ideation	20
5	1	Motion Graphics	20
5	1	Performance for Motion Capture	20
5	1	Digital Matte Painting	20
5	1	Open-source 3D Art	20
5	1	Virtual Production	20
5	1	Prop Making	20

Semester One Modules (September to January):

You can choose 3 modules (60 credits) from within your subject area – please note that there may be timetabling restrictions which will require you to change one or more modules. You must meet any pre-requisite study requirements.

Course	Qualification level	Module Code	Module Title	NTU Credits
BA (H) Animation (NTAD115)	5	ANMN20005	Animation Studio - Compulsory	40
		Please choose one of the following optional modules - Please note there are caps on module sizes so it's possible that some modules may not be available.		
	5	AADO20005	Storyboarding	20
	5	AADO20009	Character Ideation	20
	5	AADO20010	Experimental Animation	20
	5	AADO20014	Telling Stories	20
	5	AADO20015	Motion Graphics	20

	5	AADO20036	Open-Source 3D Art	20
	5	AADO20027	Digital Matte Painting	20
	5	AADO20031	Performance for Motion Capture	20
BA (H) Costume Design and Construction (VAPA033)	5	THTR20001	Costume Direction – Compulsory	40
		Please choose one of the following optional modules - Please note there are caps on module sizes so it's possible that some modules may not be available.		
	5	AADO20001	Slow Making and Craftsmanship	20
	5	AADO20006	Millinery: Object and Narrative	20
	5	AADO20009	Character Ideation	20
	5	AADO20045	Prop Making	20
	5	AADO20046	Fashion Photography: Cover Shoot	20
	5	AADO20037	Tabletop Game Development	20
	5	AADO20045	Virtual Production	20
	5	AADO20043	Interactive Narrative	20
BA (H) Creative Direction and Curation for Fashion (FTEX015)	5	FASH20008	Curate and Create for Fashion – Compulsory	40
		Please choose one of the following optional modules - Please note there are caps on module sizes so it's possible that some modules may not be available.		
	5	AADO20012	Publishing: Experimental Formats	20
	5	AADO20014	Telling Stories	20
	5	AADO20020	Responding to the Visual World	20
	5	AADO20026	Creative Live Event Production	20
	5	AADO20034	Wed3 and Creative Autonomy	20
	5	AADO20044	Fashion Styling	20
	5	AADO20045	Virtual Production	20
	5	AADO20032	Music Video	20
BA (H) Design for Film and Television (VAPA026)	5	TELE20001	Industry Craft and Context – Compulsory	40
		Please choose one of the following optional modules:		
	5	AADO20005	Storyboarding	20
	5	AADO20009	Character Ideation	20
	5	AADO20027	Digital Matte Painting	20
	5	AADO20007	Model Making: Object and Narrative	20
	5	AADO20010	Experimental Animation	20
	5	AADO20032	Music Video	20
	5	AADO20045	Virtual Production	20
	5	AADO20046	Prop Making	20
BA (H) Design for Theatre and Live Performance (VAPA037)	5	THTR20003	Audience and Live Practice - Compulsory	40
		Please choose one of the following optional modules:		
	5	AADO20005	Storyboarding	20
	5	ADDO20006	Millinery: Object and Narrative	20
	5	ADDO20021	Performance for Motion Capture	20
	5	ADDO20004	3D Materials and Exploration	20
	5	ADDO20007	Model Making: Object and Narrative	20
	5	ADDO20045	Virtual Production	20
	5	ADDO20046	Prop Making	20
	5	ADDO20038	Live Art/Collisions	20

BA (H) Fashion Communication and Promotion (FTEX015)	5	FASH20045	Agency of the Future - Compulsory	40
	5	Please choose one of the following optional modules:		
	5	AADO20017	Trend Forecasting	20
	5	AADO20019	Digital Marketing and Communication	20
	5	AADO20026	Creative Live Event Production	20
	5	AADO20034	Web3 and Creative Autonomy	20
	5	AADO20035	Beauty Industry: Innovation to Impact	20
	5	AADO20018	Buying, Merchandising and Product Fundamentals	20
	5	AADO20040	Fashion Styling	20
	5	AADO20044	Fashion Photography: Cover Shoot	20
BA (H) Fashion Design (FTEX002)	5	FASH20001	Directions: Industry and Context for Fashion Design – Compulsory	40
		Please choose one of the following optional modules:		
	5	AADO20001	Slow Making and Craftsmanship	20
	5	AADO20006	Millinery: Object and Narrative	20
	5	AADO20017	Trend Forecasting	20
	5	AADO20034	Web3 and Creative Autonomy	20
	5	AADO20039	Drawing and Exploring with Natural Materials	20
	5	AADO20044	Fashion Styling	20
	5	AADO20045	Virtual Production	20
BA (H) Fashion Knitwear Design and Knitted Textiles FT (FTEX011)	5	1	Directions: Industry and Context for Fashion Knitwear Design and Knitted Textiles - Compulsory	40
	5	Please choose one of the following optional modules:		
	5	AADO20001	Slow Making and Craftsmanship	20
	5	AADO20017	Trend Forecasting	20
	5	AADO20018	Buying, Merchandising and Product Fundamentals	20
	5	AADO20034	Web3 and Creative Autonomy	20
	5	AADO20039	Drawing & Exploring with Natural Materials	20
	5	AADO20044	Fashion Styling	20
	5	AADO20045	Virtual Production	20
	5	AADO20046	Prop Making	20
BA (H) Fashion Management FT/SW (FTEX018/019)	5	Exchange	Buying, Merchandising and Product Management – Compulsory	20
	5	Exchange	Global Sourcing and Sustainability - Compulsory	20
		Please choose one of the following optional modules:		
	5	AADO20007	Fashion Product Marketing	20
	5	AADO20034	Web3 and Creative Autonomy	20
	5	AADO20020	Responding to the Visual World	20
	5	AADO20019	Digital Marketing and Communication	20

	5	AADO20025	Creative Entrepreneurship	20
	5	AADO20026	Creative Live Event Production	20
	5	AADO20040	Fashion Photography: Cover Shoot	20
	5	AADO20044	Fashion Styling	20
BA (H) Fashion Marketing and Branding (FTEX016)	5	FMBR20005	Marketing Strategy and Insight - Compulsory	40
		Please choose one of the following optional modules:		
	5	AADO20017	Trend Forecasting	20
	5	AADO20018	Buying, Merchandising and Product Fundamentals	20
	5	AADO20019	Digital Marketing and Communication	20
	5	AADO20026	Creative Live Event Production	20
	5	AADO20034	Web3 and Creative Autonomy	20
	5	AADO20035	Beauty Industry: Innovation to Impact	20
	5	AADO20040	Fashion Photography: Cover Shoot	20
	5	AADO20044	Fashion Styling	20
BA (H) Fashion Photography (VAPA039)	5	PHOT20003	Fashion Lab – Compulsory	40
		Please choose one of the following optional modules:		
	5	AADO20012	Publishing: Experimental Formats	20
	5	AADO20014	Telling Stories	20
	5	AADO20019	Digital Marketing & Communication	20
	5	AADO20032	Music Video	20
	5	AADO20035	Beauty Industry: Innovation to Impact	20
	5	AADO20038	Live Art / Collisions	20
	5	AADO20044	Fashion Styling	20
	5	AADO20045	Virtual Production	20
BSc (H) Film Technology (DESN113)	5	FILM20006	Advanced Production - Compulsory	40
		Please choose one of the following optional modules:		
	5	AADO20005	Storyboarding	20
	5	AADO20015	Motion Graphics	20
	5	AADO20027	Digital Matte Painting	20
	5	AADO20032	Music Video	20
	5	AADO20033	Sound Art and Design	20
	5	AADO20040	Fashion Photography: Cover Shoot	20
	5	AADO20045	Virtual Production	20
	5	AADO20046	Prop Making	20
BA (H) Filmmaking (NTAD149)	5	FILM20004	Film Production 1 - Compulsory	40
		Please choose one of the following optional modules:		
	5	AADO20005	Storyboarding	20

	5	AADO20015	Motion Graphics	20
	5	AADO20020	Responding to the Visual World	20
	5	AADO20027	Digital Matte Painting	20
	5	AADO20032	Music Video	20
	5	AADO20033	Sound Art and Design	20
	5	AADO20041	Sports Photography	20
	5	AADO20045	Virtual Production	20
BA (H) Fine Art (VAPA003)	5	Exchange	Speculation: Staging Fine Art Practice – Compulsory	30
	5	Exchange	Writing Contemporary Art: Analysis – Compulsory	10
		Please choose one of the following optional modules:		
	5	AADO20005	Live Art/ Collisions	20
	5	AADO20015	Ecological futures: A creative response	20
	5	AADO20020	Drawing and exploring with natural materials	20
	5	AADO20027	Model Making: object and narrative	20
	5	AADO20032	Virtual Production	20
	5	AADO20033	Experimental Animation	20
	5	AADO20041	Responding to the Visual World	20
	5	AADO20045	Slow Making and Craftmanship	20
BA (H) Games Art (DESN109)		Please choose one of the following 2 semester one modules:		
	5	1	Progressing 2D Digital Art	40
	5	1	Progressing 3D Digital Art	40
		Please choose one of the following optional modules:		
	5	AADO20005	Storyboarding	20
	5	AADO20009	Character Ideation	20
	5	AADO20010	Experimental Animation	20
	5	AADO20031	Performance for Motion Capture	20
	5	AADO20037	Tabletop Game Development	20
	5	AADO20043	Interactive Narrative	20
BSc (H) Games Design (DESN111)	5	DESN20019	System and Level Design – Compulsory	40
		Please choose one of the following optional modules:		
	5	AADO20004	3D Materials and exploration	20
	5	AADO20005	Storyboarding	20
	5	AADO20028	Exploring Creative Coding	20
	5	AADO20031	Performance for Motion Capture	20
	5	AADO20033	Sound Art and Design	20
	5	AADO20036	Open-source 3D Art	20
	5	AADO20043	Interactive Narrative	20
	5	AADO20037	Tabletop Game Development	20

BA (H) Graphic Design (DESN005)	5	Exchange	Exploring the Graphic Design Industry - Compulsory	30
	5	Exchange	Design in Context - Compulsory	10
		Please choose one of the following optional semester one modules:		
	5	AADO20039	Drawing and Exploring with Natural Materials	20
	5	AADO20012	Publishing: Experimental Formats	20
	5	AADO20013	Typography: Use and Expression	20
	5	AADO20014	Telling Stories	20
	5	AADO20015	Motion Graphics	20
	5	AADO20016	Ethical Design	20
	5	AADO20019	Digital Marketing and Communication	20
	5	AADO20028	Exploring Creative Coding	20
BA (H) Illustration (DESN100)	5	Exchange	Professional Context and Personal Direction - Compulsory	30
	5	Exchange	Contemporary Issues in Illustration - Compulsory	10
		Please choose one of the following optional semester one modules:		
	5	AADO20005	Storyboarding	20
	5	AADO20010	Experimental Animation	20
	5	AADO20012	Publishing: Experimental Formats	20
	5	AADO20013	Typography: Use and Expression	20
	5	AADO20014	Telling Stories	20
	5	AADO20028	Exploring Creative Coding	20
	5	AADO20039	Drawing and Exploring with Natural Materials	20
	5	AADO20042	Ecological Futures: A Creative Response	20
	5	AADO20046	Prop Making	20
BA (H) Motion Graphics (DESN0105)	5	Exchange	Motion Graphics in Context – Compulsory	10
	5	Exchange	Exploring Motion Graphics – Compulsory	30
		Please choose one of the following optional semester one modules:		
	5	AADO20012	Publishing : Experimental Formats	20
	5	AADO20013	Typography : Use and Expression	20
	5	AADO20019	Digital Marketing and Communication	20
	5	AADO20028	Exploring Creative Coding	20
	5	AADO20032	Music Video	20
	5	AADO20036	Open-source 3D Art	20
	5	AADO20045	Virtual Production	20
	5	AADO20007	Model Making : Object and Narrative	20
BA (H) Photography (VAPA004)	5	PHOT20005	Photography and the World - Compulsory	40
		Please choose one of the following optional semester one modules:		
	5	AADO20012	Publishing: Experimental Formats	20
	5	AADO20013	Typography: Use and Expression	20
	5	AADO20019	Digital Marketing and Communication	20
	5	AADO20032	Music Video	20

	5	AADO20033	Sound Art and Design	20
	5	AADO20038	Live Art / Collisions	20
	5	AADO20039	Drawing & Exploring with Natural Materials	20
	5	AADO20045	Virtual Production	20
BA (H) Sports Photography (VAPA041)	5	PHOT20007	Experimental Sports – Compulsory	40
		Please choose one of the following optional semester one modules:		
	5	AADO20016	Ethical Design	20
	5	AADO20019	Digital Marketing and Communication	20
	5	AADO20014	Telling Stories	20
	5	AADO20031	Performance for Motion Capture	20
	5	AADO20032	Music Video	20
	5	AADO20045	Virtual Production	20
	5	AADO20043	Interactive Narrative	20
	5	AADO20036	Open-Source 3D Art	20
BA (H) Textile Design (FTEX007)	5	TEXT20001	Directions: Industry and Context for Textile Design – Compulsory	40
		Please choose one of the following optional semester one modules:		
	5	AADO20001	Slow Making and Craftsmanship	20
	5	AADO20004	3D Materials and Exploration	20
	5	AADO20017	Trend Forecasting	20
	5	AADO20018	Buying, Merchandising and Product Fundamentals	20
	5	AADO20025	Creative Entrepreneurship	20
	5	AADO20039	Drawing and Exploring with Natural Materials	20
	5	AADO20042	Ecological Futures: A Creative Response	20
	5	AADO20044	Fashion Styling	20
BA (H) Visual Effects Art (DESN107)		Please choose one of the following 2 semester one modules:		
	5	1	Progressing VFX Compositing	40
	5	1	Progressing 3D Digital Art	40
		Please choose one of the following optional semester one modules:		
	5	1	Storyboarding	20
	5	1	Character Ideation	20
	5	1	Motion Graphics	20
	5	1	Performance for Motion Capture	20
	5	1	Digital Matte Painting	20
	5	1	Open-source 3D Art	20
	5	1	Virtual Production	20
	5	1	Prop Making	20

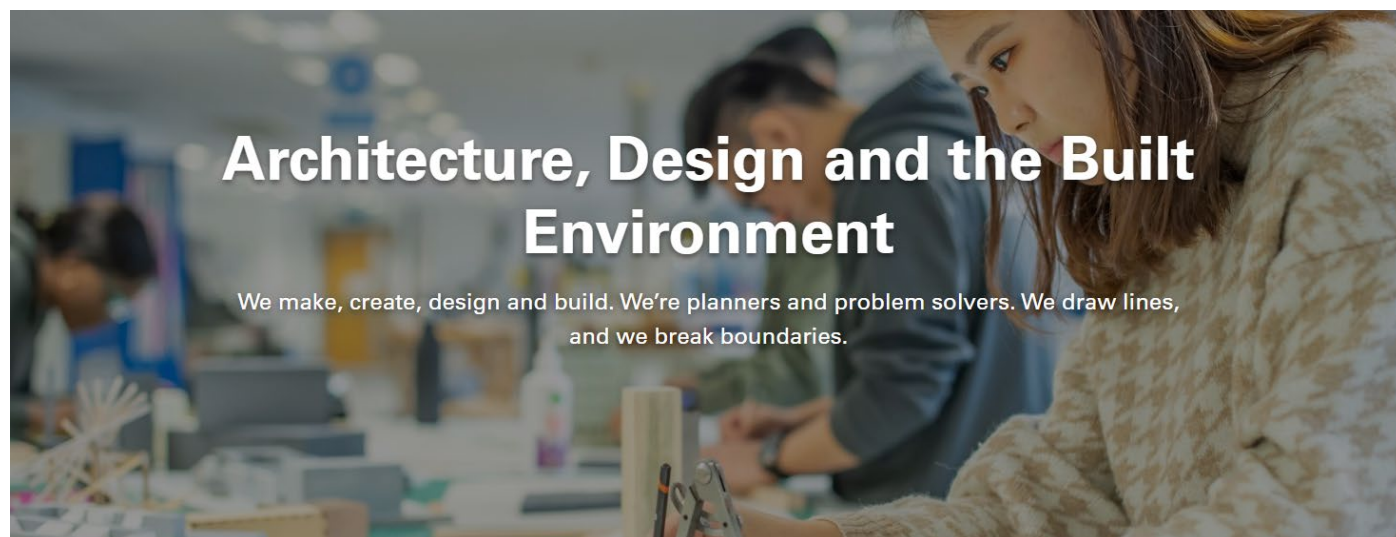
Semester Two Modules (January to May):

Course	Qualification level	Module Code	Module Title	NTU Credits
BA (H) Animation	5	ANMN20004	Animation Production - Compulsory	40
	5	AADC20001	Co Lab Research, Exploration and Risk-taking-Compulsory	20

BA (H) Costume Design and Construction	5	THTR20002	Costume Exploration – Compulsory	40
	5	AADC20001	Co Lab Research, Exploration and Risk-taking-Compulsory	20
BA (H) Creative Direction and Curation for Fashion	5	FASH20009	Direct and Produce for Fashion – Compulsory	40
	5	AADC20001	Co Lab Research, Exploration and Risk-taking-Compulsory	20
BA (H) Design for Film and Television	5	TELE20002	Advanced Skills and Concepts – Compulsory	40
	5	AADC20001	Co Lab Research, Exploration and Risk-taking-Compulsory	20
BA (H) Design for Theatre and Live Performance	5	THTR20004	Exploration and innovation – Compulsory	40
	5	ADDC20001	CoLab Research, Exploration and Risk-taking - Compulsory	20
BA (H) Fashion Communication and Promotion	5	FASH20046	Critical Fashion Journalism - Compulsory	20
	5	ADDC20001	CoLab Research, Exploration and Risk-taking - Compulsory	20
	5	FASH20047	Fashion Futures - Compulsory	20
BA (H) Fashion Design	5	FASH20002	Directions: Innovation and Transition for Fashion Design- Compulsory	40
	5	AADC20001	CoLab Research, Exploration and Risk-taking - Compulsory	20
BA (H) Fashion Knitwear Design and Knitted Textiles	5	FKDN20004	Directions: Innovation and Transition for Fashion Knitwear Design and Knitted Textiles	40
	5	AADC20001	CoLab Research, Exploration and Risk-taking - Compulsory	20
BA (H) Fashion Management	5	Exchange	Buying, Merchandising and Product Management – Compulsory	20
	5	Exchange	Global Sourcing and Sustainability – Compulsory	20
	5	AADC20001	CoLab Research, Exploration and Risk- taking – Compulsory	20
BA (H) Fashion Marketing and Branding	5	FMBR20006	Brand Environments – Compulsory	40
	5	AADC20001	CoLab Research, Exploration and Risk-taking - Compulsory	20
BA (H) Fashion Photography	5	PHOT20004	Fashion Assignments – Compulsory	40
	5	AADC20001	CoLab Research, Exploration and Risk-taking – Compulsory	20
BSc (H) Film Technology	5	FILM20007	Emerging Technologies – Compulsory	40
	5	AADC20001	CoLab Research, Exploration and Risk-taking – Compulsory	20
BA (H) Filmmaking	5	FILM20005	Film Production 2 – Compulsory	40
	5	AADC20001	CoLab Research, Exploration and Risk-taking – Compulsory	20
BA (H) Fine Art	5	Exchange	Speculation: Staging Fine Art Practice – Compulsory	30
	5	Exchange	Writing Contemporary Art: Analysis – Compulsory	10
	5	AADC20001	Co Lab Research, Exploration and Risk-taking – Compulsory	20

BA (H) Games Art	5	DESN20018	Games Art Studio - Compulsory	40
	5	AADC20001	Co Lab Research, Exploration and Risk-taking – Compulsory	20
BSc (H) Games Design	5	DESN20020	Games Design Studio – Compulsory	40
	5	AADC20001	Co Lab Research, Exploration and Risk-taking – Compulsory	20
BA (H) Graphic Design	5	Exchange	Design in Context – Compulsory	10
	5	Exchange	Exploring the Graphic Design Industry – Compulsory	30
	5	AADC20001	Co Lab Research, Exploration and Risk-taking - Compulsory	20
BA (H) Illustration	5	Exchange	Contemporary Issues in Illustration - Compulsory	10
	5	Exchange	Professional Context and Personal Direction - Compulsory	30
	5	AADC20001	Co Lab Research, Exploration and Risk-taking - Compulsory	20
BA (H) Motion Graphics	5	Exchange	Motion Graphics in Context – Compulsory	10
	5	Exchange	Exploring Motion Graphics – Compulsory	30
	5	AADC20001	Co Lab Research, Exploration and Risk-taking - Compulsory	20
BA (H) Photography	5	PHOT20006	Live Assignments – Compulsory	40
	5	AADC20001	Co Lab Research, Exploration and Risk-taking - Compulsory	20
BA (H) Sports Photography	5	PHOT20008	Live Sports Assignments – Compulsory	40
	5	AADC20001	Co Lab Research, Exploration and Risk-taking - Compulsory	20
BA (H) Textile Design	5	TEXT20002	Directions: Innovation and Transition for Textile Design – Compulsory	40
	5	AADC20001	Co Lab Research, Exploration and Risk-taking – Compulsory	20
BA (H) Visual Effects Art	5	DESN20026	Visual Effects Art Studio – Compulsory	40
	5	AADC20001	Co Lab Research, Exploration and Risk-taking – Compulsory	20

School of Architecture, Design and the Built Environment



Full Year Modules

You will take the following modules (120 credits) from one course. You must meet any pre-requisite study requirements.

Course	Qualification level	Module Code	Module Title	NTU Credits
BSc (H) Real Estate	6	PRMD30026	Research Project	20
	6	PRMD30022	Investment Appraisal and Valuation	20
	6	PRMD30023	Property Investment 1 and 2	40
	6	PRMD30014	Corporate Real Estate 1 and 2	40
BA (H) Interior Architecture & Design	5	DESN22081	IAD Design Studio	60
	5	DESN22064	Design and Professional Skills	20
	5	DESN22080	Interior Architecture and Design in Context 2	20
	5	DESN22082	Design and Technology	20
BEng (H) Civil Engineering	5	DESN22051	Construction Practice and the Environment	20
	5	DESN22052	Further Engineering Mathematics and Fluid Mechanics	20
	5	DESN22053	Ground Engineering	20

	5	CIVE20201	Integration of Engineering Apps	20
	5	CIVE20202	Structural Analysis, Design and Detailing	40
	6	CIVE30001	Further Geotechnical Engineering and Design	20
	6	CIVE30002	Infrastructure Engineering 1	20
	6	DESN30140	Further Structural Design	20
	6	CIVE32221	Individual with Group Project	40
	6	DESN30107	Professional Responsibilities & Development in Civil Engineering	20
BA (H) Product Design	5	PROD20005	Professional Practice	20
	5	PROD20006	Advanced Design Communications	20
	5	PROD20007	Design Production, Markets & Innovation	20
	5	PROD20008	Elective Design Project	40
	5	PROD20009	Exploring Design Futures	20
BSc (H) Product Design	5	PROD20014	Advanced Design & Technical Communication	20
	5	PROD20015	Technology, Society & Sustainable Futures	20
	5	PROD20005	Professional Practice	20
	5	PROD20008	Elective Design Project	40
	5	PROD20016	Exploring Design for Society	20
BA (H) Furniture and Product Design	5	PROD20005	Professional Practice	20
	5	PROD20010	Advanced Design Tools, Materials and Production	20
	5	PROD20012	Sustainability, Materials & Processes	20
	5	PROD20008	Elective Design Project	40
	5	PROD20013	Exploring Materials and Processes	20
BSc (H) Architectural Technology	5	DESN22015	Technology and Design Studio 2	60
	5	DESN22087	Digital Design and BIM	20

	5	DESN22071	Construction Technology 2	20
	5	DESN22010	Professional Development and Employability	20

Semester One Modules (September to January):

You will take the modules below (60 credits) from one course. You must meet any pre-requisite study requirements.

Course	Qualification level	Module Code	Module Title	NTU Credits
BArch (H) Architecture	5	DESN22078	Technology and Environment 2	8
	5	DESN22075	Integrated Design Studio	22
	5	DESN22076	Architecture in Context 2	20
	5	DESN22073	Interdisciplinary Design Studies	10
BA (H) Interior Architecture & Design	5	DESN22064	Design and Professional Skills 2	10
	5	DESN22080	Interior Architecture and Design in Context 2	20
	5	DESN22081	IAD Design Studio 2	30
BSc (H) Architectural Technology	5	DESN22015	Technology and Design Studio 2	30
	5	DESN22087	Digital Design and BIM	10
	5	DESN22071	Construction Technology 2	10
	5	DESN22010	Professional Development and Employability	10
BA (H) Product Design	5	PROD20005	Professional Practice	20
	5	PROD20006	Advanced Design Communications	20
	5	PROD20007	Design Production, Markets & Innovation	20
BSc (H) Product Design	5	PROD20014	Professional Practice	20
	5	PROD20015	Advanced Design & Technical Communication	20
	5	PROD20005	Technology, Society & Sustainable Futures	20

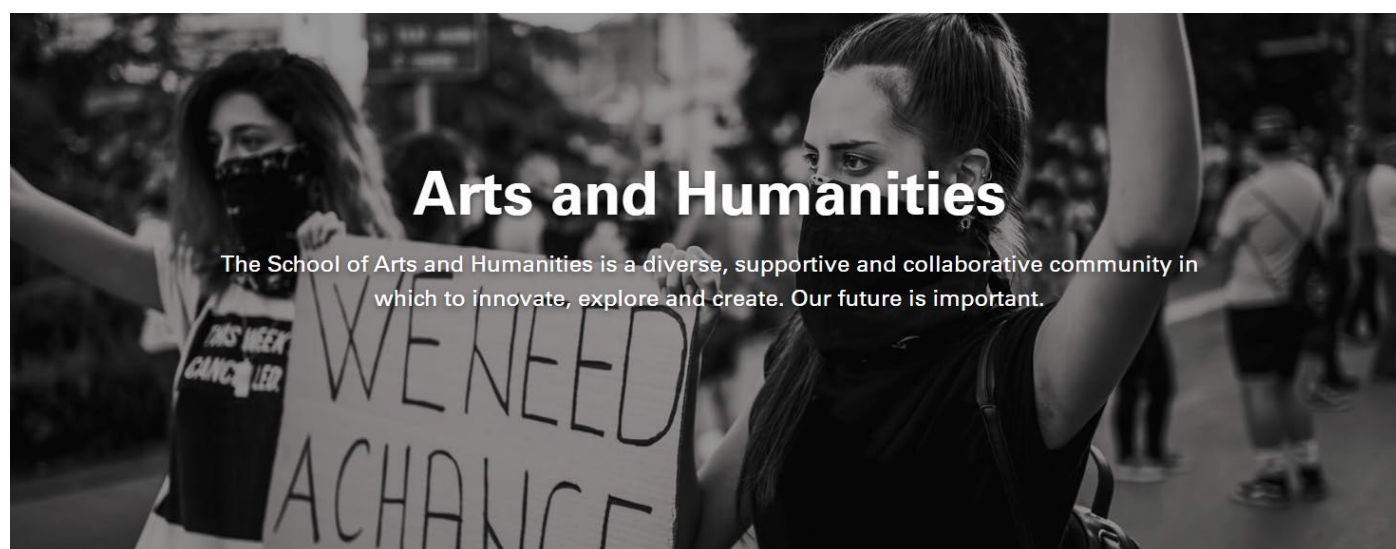
BA (H) Furniture and Product Design	5	PROD20005	Professional Practice	20
	5	PROD20010	Advanced Design Tools, Materials and Production	20
	5	PROD20012	Sustainability, Materials & Processes	20
BSc (H) Real Estate	6	PRMD30022	Investment Appraisal and Valuation	20
	6	PRMD30023	Property Investment 1	20
	6	PRMD30014	Corporate Real Estate 1	20

Semester Two Modules (January to May):

You will take the modules below (60 credits) from one course. You must meet any pre-requisite study requirements.

Course	Qualification level	Module Code	Module Title	NTU Credits
BA (H) Product Design	5	PROD20008	Elective Design Project	40
	5	PROD20009	Exploring Design Futures	20
BSc (H) Product Design	5	PROD20008	Elective Design Project	40
	5	PROD20009	Exploring Design Futures	20
BA (H) Furniture and Product Design	5	PROD20008	Elective Design Project	40
	5	PROD20013	Exploring Materials and Processes	20
BSc (H) Real Estate	6	PRMD30026	Research Project	20
	6	PRMD30023	Property Investment 2	20
	6	PRMD30014	Corporate Real Estate 2	20

School of Arts and Humanities



Arts and Humanities

The School of Arts and Humanities is a diverse, supportive and collaborative community in which to innovate, explore and create. Our future is important.



Department of Humanities

Welcome to the Department of Humanities at Nottingham Trent University. We're home to a diverse community of scholars and practitioners from a broad range of humanities disciplines.



Nottingham Institute of Languages and Intercultural Communication

Nottingham Institute of Languages and Intercultural Communication (NILIC) delivers innovative professional development, academic training, and language learning courses.



Department of Journalism and Media

With strong industry links, the Department of Journalism & Media at NTU delivers cutting-edge courses and training at the forefront of journalism and media education.

Please note that from September 2025, the School of Arts and Humanities will be merging with the School of Social Sciences so there may be some changes to the modules listed below.

Semester One Modules (September to January):

You can choose 3 modules (60 credits) from within your subject area – please note that there may be timetabling restrictions which will require you to change one or more modules. You must meet any pre-requisite study requirements.

Subject	Qualification level	Module Code	Module Title	NTU Credits
English	4	ENGL10123	Beginning Writing: The Writing World	20
	4	ENGL10423	Literary Pasts, Presents and Futures	20
	4	ENGL10623	The Book Group	20

	4	ENGL10723	Reading the Future	20
	5	ENGL20023	Magazine Publishing: from Concept to Dissemination	20
	5	ENGL20123	Advanced Fiction and its Contexts	20
	5	ENGL20623	Rebel Literatures	20
	5	ENGL20723	Literary Practices: Writing, Editing, Publishing	20
	6	ENGL30223	The Freelancer	20
	6	ENGL30323	Writing for Magazines: Regional, National and International Contexts	20
	6	ENGL30723	Collaboration and Performance	20
	6	ENGL30923	The English Graduate Portfolio	20
	6	ENGL31023	Contemporary Literature, Culture and Theory	20
	6	ENGL31223	Early Modern Poetry and Prose: Nation, Self, Other	20
Film & TV	4	FATV10123	Film and TV Style in Close-up	20
	5	FATV20123	Putting Film and TV Theory into Practice	20
	6	FATV30423	American Cinema since 1949: Margins and Mainstreams	20
Global Studies	6	GLOB30523	Natural Futures? Global Environmental Catastrophes and the Fate of Life on Earth	20
History	4	HIST10123	Europe since 1789: Revolution to Referendum	20
	4	HIST10223	History Matters	20
	4	HIST10323	Rewriting the Conquest of Mexico: Burying the White Gods	20
	5	HIST20123	The Historian's Craft	20
	5	HIST20223	History in Action	20
	5	HIST20723	Tudors and Stuarts: Rulers and Representations	20
	6	HIST30223	Representing History	20
	6	HIST30623	The Global Struggle for Civil and Human Rights	20
International Relations/Politics	4	INTR10023	Introduction to International Relations	20
	4	POLS10023	Politics	20
Journalism	6	JOUR30424	Stars, Stigma and Societies	20
	6	JOUR30624	Introduction to PR and Communications	20
	6	JOUR31624	Magazine Journalism	20
Media	4	MCLT10123	Analysing Media Texts	20
	4	MCLT10424	Sound Production	20
	5	MCLT20123	Media, Theory and Society	20
	5	MCLT20124	Branding for Media Production	20
	6	MCLT30223	Lifestyle and Consumer Culture	20
	6	MCLT30524	Media Production and Tourism	20
Linguistics	4	LING10023	Sounds of English	20
	4	LING10123	Morphology and Syntax	20
	4	LING10223	Language in Everyday Life	20
	5	LING20024	Comparative Linguistics	20
	5	LING23123	Problems of Language	20
	6	LING30423	Forensic Linguistics	20
	4	SOCT10023	Understanding the Communications Revolution	20

Communication & Society	5	SOCT20023	Explorations in Identity and Selfhood	20
	5	SOCT22212	Advertising, PR and Journalism: The New Creativity	20
	6	SOCT30523	What's New: The Future of Media Communications	20
	6	SOCT30323	Advertising, Journalism and the PR Project	20
Philosophy	4	PHIL10123	Ethics in the 21st Century	20
	5	PHIL20123	World Philosophy	20
	6	PHIL30423	Philosophy, Film and Media	20
	6	PHIL30623	Language, Communication and Power	20

Semester Two Modules (January to May):

You can choose 3 modules (60 credits) from within your subject area – please note that there may be timetabling restrictions which will require you to change one or more modules. You must meet any pre-requisite study requirements.

Subject	Qualification level	Module Code	Module Title	NTU Credits
English	4	ENGL10223	Writing, Editing and Publishing in a Sustainable World	20
	4	ENGL10323	Writing in a UNESCO City of Literature	20
	4	ENGL10823	Ways of Reading	20
	4	ENGL10923	Global Narratives in English	20
	5	ENGL20323	Poetry and its Contexts	20
	5	ENGL20423	Working with Scripts	20
	5	ENGL20823	Imagining the Sustainable World	20
	5	ENGL21023	Shakespeare and Co: Early Modern Drama	20
	5	ENGL21123	Black Writing in Britain	20
	5	ENGL29824	Romantic Revolutions	20
	6	ENGL30423	Poetry and the Planet	20
	6	ENGL30523	Creative Writing in the Community (working with Creative Writing)	20
	6	ENGL31423	Gothic Rebels and Reactionaries	20
	6	ENGL39704	Modernist Writing	20
Film & TV	4	FATV10223	The Bigger Picture: Core Concepts, Contexts and Debates in Film and Television Studies	20
	4	FATV10323	International Ciné-Club	20
	5	FATV20223	British Cinema	20
	5	FATV20323	Analysing British Television	20
	6	FATV30223	American Television since 1950: from Broadcast to Narrowcast	20
	6	FATV30323	Rubbish Film	20
Global Studies	6	GLOB30412	Development in the 21st Century	20
History	4	HIST10423	Sustainability in Culture and Society	20
	4	HIST10523	America 1607-2020: from Colony to Superpower	20
	4	HIST10623	The Islamic World of the Near East	20

	5	HIST20323	Money Matters: Finance Past and Present	20
	5	HIST20423	Fascism Past and Present	20
	5	HIST20823	History Online: Researching and Presenting the Past	20
	6	HIST30523	Legacies and Memories of Conflict	20
	6	HIST30823	History Online: the Value and Values of History	20
	6	HIST30423	Understanding Emotions	20
International Relations/Politics	4	INTR10123	International Relations and Global History	20
	4	POLS10123	Young Citizens, Place and Belonging	20
Humanities	5	HUMS21123	Intercultural Communication at Work	20
	5	HUMS21223	People and Planet: Pasts, Presents and Futures	20
	5	HUMS21323	Language, Inequality and Social Justice	20
Journalism	5	JOUR20424	Ethics and Representation	20
	5	JOUR21224	Sports Journalism	20
	5	JOUR21324	Photojournalism	20
	5	JOUR21724	Fashion Journalism	20
	6	JOUR31424	Podcasting	20
Media	4	MCLT10223	Understanding Media Industries	20
	4	MCLT10323	Practicing Media Literacy	20
	5	MCLT20223	Analysing Popular Music	20
	5	MCLT20323	Researching Media Communication and Culture	20
	5	MCLT20423	Creative Documentary	20
	5	MCLT20523	Short Film Production and Exhibition	20
	6	MCLT30423	Cultural Policy	20
	6	MCLT30523	The Body and Popular Culture	20
Linguistics	4	LING10323	Semantics and Pragmatics	20
	4	LING10423	Introduction to TESOL	20
	4	LING10523	Language, Society and Culture	20
	5	LING20123	Communication Disorders	20
	5	LING20324	Practical English Language Teaching	20
	5	LING23323	Language and Local Community	20
	6	LING30223	Language and Health	20
Communication & Society	4	SOCT10123	Psychology of Communication	20
	4	SOCT10223	Journalism and Promotional Cultures	20
	5	SOCT20212	Communications and Creativity Toolkit	20
	5	SOCT20223	Journalism and PR: Critiques and Practice	20
	5	SOCT22112	Digital Identities: Politics of Communication in the Globalised World	20
	6	SOCT30623	Self in Crisis: Power, Prejudice and Otherness	20
Philosophy	4	PHIL10223	Knowing the Self: from Wonder to Wisdom	20
	4	PHIL10323	Ways of Knowing: Virtues and Vices	20
	5	PHIL20223	How to Win Every Argument: Logic, Critical Thinking and Problem Solving	20
	5	PHIL20423	Happiness and Mental Health: Philosophy, Psychotherapy and Psychoanalysis	20
	6	PHIL30523	Being Good: the Foundations of Morality	20

School of Animal, Rural and Environmental Sciences



Undergraduate study in the School of Animal, Rural and Environmental Sciences

We offer a range of undergraduate courses in subjects including:

- agriculture
- animal, equine and veterinary sciences
- conservation and ecology
- geography and environmental science
- food science and production

[Learn more about undergraduate study in ARES](#)

Please select modules from one course only – choosing modules from different courses may result in timetable clashes and so may not be available to you.

Full Year Modules Please select 60 credits (3 modules) from the Semester One list, and 60 credits (3 modules) from the Semester Two list from one course only.

Semester One Modules (September to January) for Animal Studies:

Course	Qualification level	Module Code	Module Title	NTU Credits
BSc (H) Animal Biology	5	ANIM22102	Research Skills	20
	5	ANIM22139	Animal Cognition and Training	20
	5	ANIM22149	Applied Animal Breeding	20
BSc (H) Zoo Biology	5	ANIM22102	Research Skills	20
	5	ANIM22137	Priorities of Modern Zoos	20
	5	ANIM22139	Animal Cognition and Training	20
BSc (H) Zoology	5	ANIM22102	Research Skills	20
	5	ANIM29321	Zoological Specimens and Collections	20
	5	ANIM22146	Vertebrate Zoology	20

Semester Two Modules (January to May) for Animal Studies:

Please choose 3 (60 credits).

Course	Qualification level	Module Code	Module Title	NTU Credits
BSc (H) Animal Biology	5	ANIM22140	Animal Nutritional Health	20
	5	ANIM22141	Physiology of Behaviour	20
	5	ANIM22143	Disease Investigation and Epidemiology	20
BSc (H) Zoo Biology	5	ANIM22138	Zoo Conservation Genetics	20
	5	ANIM22140	Animal Nutritional Health	20
	5	ANIM22141	Physiology of Behaviour	20
BSc (H) Zoology	5	ANIM22141	Physiology of Behaviour	20
	5	ANIM22145	Invertebrate Zoology	20
	5	ANIM22147	Biology of Host Parasite Interactions	20

Semester One Modules (September to January) for Equine Studies:

Please choose 3 (60 credits).

Course	Qualification level	Module Code	Module Title	NTU Credits
BSc (H) Equine Behaviour, Health & Welfare	5	EQUE20315	Training and Cognition	20
	5	EQUE20370	Applied Exercise Physiology	20
BSc (H) Equine Sports Science	5	EQUE20316	Sports Injury	20
	5	EQUE20370	Applied Exercise Physiology	20

Semester Two Modules (January to May) for Equine Studies:

Please choose 3 (60 credits).

Course	Qualification level	Module Code	Module Title	NTU Credits
BSc (H) Equine Behaviour, Health & Welfare	5	EQUE20337	Nutrition for Health and Performance	20
	5	EQUE20369	Human Animal Interaction	20
	5	ANIM22102	Research Skills	20
	5	EQUE20357	Reproduction, Breeding and Genetics	20
BSc (H) Equine Sports Science	5	EQUE20337	Nutrition for Health and Performance	20
	5	EQUE20357	Reproduction, Breeding and Genetics	20
	5	ANIM22102	Research Skills	20
	5	EQUE20371	Biomechanics	20

Semester One Modules (September to January) for Environmental Sciences:

Please choose 3 (60 credits).

NB: Some modules involve residential fieldwork so there will be additional costs/travel. During the period of your exchange you will be charged a maximum of £60 for residential trips in the UK and a maximum of £300 (subject to exchange rates) for overseas residential fieldwork which will cover travel, accommodation and entrance fees where applicable. Non-residential day excursions will not involve additional costs. A valid passport and any associated visas will also be required for field trips outside of the UK.

Course	Qualification level	Module Code	Module Title	NTU Credits
BSc (H) Wildlife Conservation	5	CCMT20121	Applied Habitat Management	20
	5	CCMT20201	Experimental Design and Analysis	20
	5	CCMT20422	Wildlife Population Biology	20
BSc (H) Ecology and Conservation	5	CCMT20121	Applied Habitat Management	20
	5	CCMT20201	Experimental Design and Analysis	20
	5	CCMT20412	Environmental Monitoring and Geographical Information Systems (GIS)	20
BSc (H) Agriculture	5	CCMT20121	Applied Habitat Management	20
	5	CCMT20201	Experimental Design and Analysis	20
	5	CCMT20701	Livestock Nutrition and Health	20
	5	CCMT20703	Farm Business Performance	20

Semester Two Modules (January to May) for Environmental Sciences:

Please choose 3 (60 credits).

NB: Some modules involve residential fieldwork so there will be additional costs/travel. During the period of your exchange you will be charged a maximum of £60 for residential trips in the UK and a maximum of £300 (subject to exchange rates) for overseas residential fieldwork which will cover travel, accommodation and entrance fees where applicable. Non-residential day excursions will not involve additional costs. A valid passport and any associated visas will also be required for field trips outside of the UK.

Course	Qualification level	Module Code	Module Title	NTU Credits
BSc (H) Wildlife Conservation	5	CCMT20122	Behavioural and Evolutionary Ecology	20
	5	CCMT20500	Law and Policy	20
	5	CCMT20523	Wildlife Field Techniques and Geographical Information Systems (GIS)	20
BSc (H) Ecology and Conservation	5	CCMT20291	Technical Skills	20
	5	CCMT2033	Land Use Ecology	20
	5	CCMT20500	Law and Policy	20
BSc (H) Environmental Science	5	CCMT20291	Technical Skills	20
	5	CCMT20500	Law and Policy	20
BSc (H) Agriculture	5	CCMT20333	Land Use Ecology	20
	5	CCMT20700	Contemporary Issues in Agriculture	20
	5	CCMT20702	Crop Nutrition, Health and Protection	20

Semester One Modules (September to January) for Geography:

Please choose 3 (60 credits).

NB: Some modules involve residential fieldwork so there will be additional costs/travel. During the period of your exchange you will be charged a maximum of £60 for residential trips in the UK and a maximum of £300 (subject to exchange rates) for overseas residential fieldwork which will cover travel, accommodation and entrance fees where applicable. Non-residential day excursions will not involve additional costs. A valid passport and any associated visas will also be required for field trips outside of the UK.

Course	Qualification level	Module Code	Module Title	NTU Credits
BSc (H) Geography	5	GEOG20011	Geographical Information Systems (GIS) and Spatial Analysis	20
	5	GEOG20032	Global Climate Emergency	20
	5	GEOG20041	Principles and Practice in Geography	20
BSc (H) Agriculture	5	GEOG20011	Geographical Information Systems (GIS) and Spatial Analysis	20
BSc (H) Environmental Science	5	GEOG20032	Global Climate Emergency	20

Semester Two Modules (January to May) for Geography:

Please choose 3 (60 credits).

NB: Some modules involve residential fieldwork so there will be additional costs/travel. During the period of your exchange you will be charged a maximum of £60 for residential trips in the UK and a maximum of £300 (subject to exchange rates) for overseas residential fieldwork which will cover travel, accommodation and entrance fees where applicable. Non-residential day excursions will not involve additional costs. A valid passport and any associated visas will also be required for field trips outside of the UK.

Course	Qualification level	Module Code	Module Title	NTU Credits
--------	---------------------	-------------	--------------	-------------

BSc (H) Geography	5	GEOG20051	Natural Hazards and Disasters	20
	5	GEOG20091	Sustainability	20
	5	GEOG20092	Environmental Change (Fieldwork)	20
	5	GEOG20094	International Development and Social Justice	20
	5	GEOG20095	River Dynamics and Management	20
BSc (H) Environmental Science	5	GEOG20091	Sustainability	20

Nottingham Business School



Full Academic Year Modules:

Students can choose one of our 10 undergraduate programmes and take all of the modules offered in the first semester (September to January), and they can then choose 3 modules offered in the second

semester (January to June) OR 3 modules from the mixed module route (see below for guidance). Your modules should total 120 credit points.

Semester One Modules

Students can choose one of the 10 undergraduate programmes below and must take all of the modules listed in Semester One.

Semester Two Modules

Students can choose one of the 10 undergraduate programmes below and must take 3 modules (30 credits) listed in Semester Two OR 3 modules from the mixed module route (see below for guidance). Your modules should total 120 credit points.

Please note

- that we do not offer BA (H) Economics for Semester Two
- students who would like to join BA (H) International Business in Semester Two will not be able to take Foreign Language 2. Instead they can study all of the modules offered (2 x compulsory and 2 x optional) for 70 credits OR 2 x compulsory and 1 optional module for 50 credits
- module choices are subject to availability and students are responsible for ensuring that any pre-requisites are met
- NBS do not allow students to change modules after the semester has begun.

Course	Qualification level	Semester	Module Title	NTU Credits
BA (H) Accounting and Finance (BAAF)	5	One	Financial Management - Compulsory	20
	5	One	Financial Reporting - Compulsory	20
	5	One	Management Accounting Information - Compulsory	20
	5	Two	Finance in the Public Services – Compulsory	20
	5	Two	Forensic Accounting and Assurance – Compulsory	20
	5	Two	Survey and Analysis	20
	5	Two	Taxation	20
BA (H) Business (BAB)	5	One	Digital Entrepreneurship - Compulsory	20
	5	One	Managing & Organising for Human Resources – Compulsory	20

	5	One	Survey Research - Compulsory	20
	For Semester Two please choose 3 modules from the 'Semester Two Mixed Modules' below.			
BA (H) Business Management and Accounting and Finance	5	One	Corporate Financial Analysis - Compulsory	20
	5	One	Accounting in its Organisation Contexts - Compulsory	20
	5	One	Financial Management - Compulsory	20
	For Semester Two please choose 3 modules from the 'Semester Two Mixed Modules' below.			
BA (H) Business Management and Economics	5	One	Economics of International Growth and Development - Compulsory	20
	5	One	Macroeconomics Theory and Applications - Compulsory	20
	5	One	Microeconomics Theory and Applications – Compulsory	20
	For Semester Two please choose 3 modules from the 'Semester Two Mixed Modules' below.			
BA (H) Business Management and Human Resources	5	One	Exploring Human Resource Management - Compulsory	20
	5	One	Human Resource Development - Compulsory	20
	5	One	Researching People and Organisations - Compulsory	20
	For Semester Two please choose 3 modules from the 'Semester Two Mixed Modules' below.			
BA (H) Business Management and Entrepreneurship	5	One	Enterprise in Practice – Compulsory	20
	5	One	Competitive Strategy and Innovation – Compulsory	20
	5	One	Dynamic Entrepreneurship -Compulsory	20
	For Semester Two please choose 3 modules from the 'Semester Two Mixed Modules' below.			

BA (H) Business Management and Marketing	5	One	Integrated Marketing Communications - Compulsory	20
	5	One	Research for Marketing - Compulsory	20
	5	One	Buyer Behaviour - Compulsory	20
	For Semester Two please choose 3 modules from the 'Semester Two Mixed Modules' below.			
BA (H) Marketing	5	One	Research for Marketing – Compulsory	20
	5	One	Buyer Behaviour – Compulsory	20
	5	One	Delivering Customer Value – Compulsory	20
	5	Two	Digital Marketing – Compulsory	20
	5	Two	Integrated Communications – Compulsory	20
	5	Two	Exploring Strategy and Innovation	20
	5	Two	Managing Global Supply Chain	20
BA (H) International Business	5	One	International Business Environment - Compulsory	20
	5	One	Economics for International Business – Compulsory	20
	5	One	Managing Culture Across Borders – Compulsory	10
	5	One	Foreign Language 1 – Compulsory	10
	5	Two	Managing Culture Across Borders 2 - Compulsory	10
	5	Two	Foreign Language 2 – Compulsory	10
	5	Two	Managing Global Supply Chain - Compulsory	20
	5	Two	Management Accounting for Decision Making	20

	5	Two	Digital Marketing	20
BA (H) Economics	5	One	Intermediate Macroeconomics – Compulsory	20
	5	One	Intermediate Microeconomics – Compulsory	20
	5	One	Environmental & Resource Economics	20
	5	One	Industrial Economics (Eco with Bus)	20
	5	One	Economics of International Banking	20
	For Semester Two please choose one of the Sets below:			
	5	Two	Set One Survey Research & Analysis Econometrics Economic Evaluation	60
	5	Two	Set Two Survey Research & Analysis Managerial Economics Econometrics	60
	5	Two	Set Three Survey Research & Analysis Global Financial Markets Econometrics	60

Languages – available for students on BA (H) International Business for Semester One only. The languages available are Arabic, English (Business English or as a foreign language), French, German, Italian, Japanese, Mandarin, Spanish, and Korean,

Semester Two Mixed Modules (January to May):

Please select 3 modules as directed above.

Qualification level	Semester	Module Title	NTU Credits
5	Two	International Business and Communication*	20
5	Two	Survey Research & Analysis**	20
5	Two	Management Accounting for Decision Making***	20
5	Two	Digital Entrepreneurship #	20

5	Two	Marketing Management	20
5	Two	People, Organisation and Society****	20
5	Two	Managing Global Supply Chain	20
5	Two	Exploring Strategy and Innovation~	20
5	Two	Digital Marketing	20

*You cannot study this module if you have studied International Business Environment in Semester One.

**You cannot study this module if you have studied Survey Analysis for Business in Semester One.

***You cannot study this module if you have studied Financial Management or Management Accounting Information in Semester One.

#You cannot study this module if you have chosen it in Semester One.

****You cannot study this module if you have studied Managing and Organising for Human Resources in Semester One.

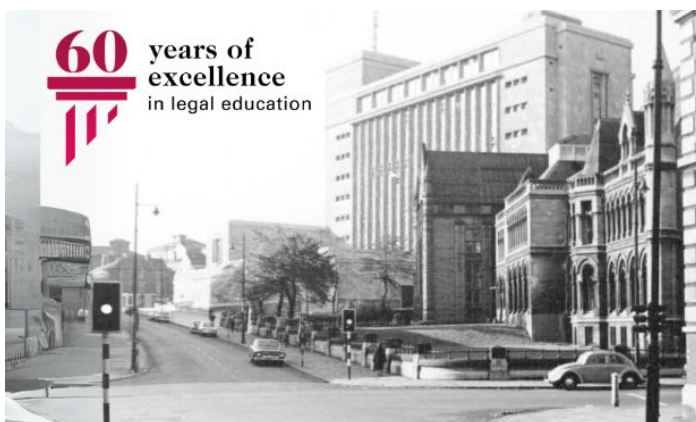
~You cannot study this module if you have studied Survey Research and Analysis for Business in Semester One.

Nottingham Law School



Nottingham Law School

Celebrating 60 years of excellence in legal education



Celebrating 60 years of legal excellence

With 60 years' experience nurturing students into exceptional legal professionals, we're one of the UK's largest and most established law schools, with an outstanding reputation for excellence in legal education. This 60-year milestone reflects our success to date and has been driven by our innovative approach to the teaching and practice of law, our world-class pioneering research and our commitment to social justice.

[Discover our heritage](#)

If you are joining NLS for a full academic year you will need to choose 120 credits worth of modules, if you are joining for a semester, you will need to choose 60 credits.

Students are responsible for checking any pre-requisite study needed for some modules.

Please note that there may be timetabling restrictions which will require you to change one or more modules before you arrive in Nottingham.

Questions? Please contact Alex and Michelle at NLSAdminLLB@ntu.ac.uk

Full Academic Year Modules:

You can mix Level 1, 2 and 3 modules – your choices must total 120 credits. If you only choose Level 2 modules, please note the compulsory ones.

Qualification level	Semester	Module Title	NTU Credits
4	Full Year	Law of Contract and Problem Solving	20
4	Full Year	Tort Law and Legal Reasoning	20

4	Full Year	Legal and Professional Environment	20
4	Full Year	Public Law and Research Skills	20
4	Full Year	International, European and Comparative Law and Group Presentation Skills	20
4	Full Year	University Language Programme	20
4	One	Law in Action	15
5	Full Year	Criminal Law with Mooting -Compulsory	40
5	Full Year	Law of Trusts and Applied Legal Analysis - Compulsory	20
5	Full Year	Land Law and Professional Advice - Compulsory	20
5	Full Year	Commercial Law and Negotiation - Compulsory	20
5	Full Year	Employment Law	20
5	Full Year	Family Law	20
5	Full Year		20
5	Full Year	Human Rights	20
5	Full Year	Language Module – ULP (University Language Programme)*	20
6	Full Year	Critical Legal Thinking	20
6	Full Year	Human Rights	20
6	Full Year	International Human Rights	20
6	Full Year		20
6	Full Year	Medical Law	20
6	Full Year	Criminology and Criminal Justice	20
6	Full Year	U.S. Law	20

6	Full Year	Commercial Law	20
6	Full Year	Company Law	20
6	Full Year	Immigration and Asylum Law	20
6	Full Year	Public International Law	20
6	Full Year	Intellectual Property Law	20
6	Full Year	Sexuality and the Law	20
6	Full Year	Family Law	20
6	Full Year	Sports Law	20
6	Full Year	Laws of Armed Conflict	20

**The University Language Programme (ULP) offers students an opportunity to acquire and develop both general and professionally language skills at a number of levels. Students are placed in an appropriate stage, corresponding to their prior knowledge and competence. English as a Foreign Language is offered only from ULP stages 4 to 7. For full details please visit www.ntu.ac.uk/ulp*

*Each stage comprises two linked modules one in the first half of the year and one in the second half. A full years course is worth 10 ECTS. You can only take a ULP course as part of a year-long exchange or during semester 1. **New ULP courses do not start in semester 2.***

Semester One Modules (September to January):

Choose 3 modules:

Qualification level	Semester	Module Title	NTU Credits
4	One	Law in Action	15
5	One	Criminal Law with Mooting	20
5	One	Land Law and Professional Advice	20
5	One	Law of Trusts and Advanced Legal Reasoning	20
6	One	International Competition Law	20

6	One	United States Law	20
---	-----	-------------------	----

Semester Two Modules (January to May):

These modules are compulsory:

Qualification level	Semester	Module Title	NTU Credits
5	Two	Public International Law	20
5	Two	Current Issues in International Law	20
5	Two	Comparative Law	20
6	Two	International Trade Law	20

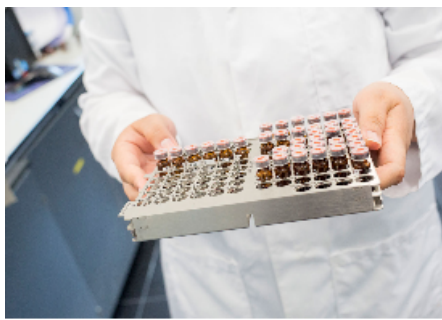
School of Science and Technology





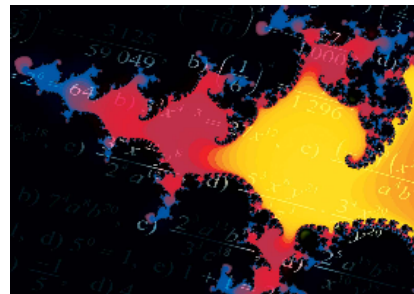
Department of Biosciences

Welcome to the Department of Biosciences. We deliver innovative teaching and research in subjects including biomedical science, microbiology, biochemistry and pharmacology, with a vibrant postgraduate and PhD research community.



Department of Chemistry

Welcome to chemistry at NTU, part of the Department of Chemistry and Forensic Science. Our courses are taught in modern, innovative teaching spaces, offering excellent career prospects, including accreditation by The Royal Society of Chemistry.



Department of Mathematics

Our portfolio of courses is diverse and popular, covering foundation level through to a suite of BSc degrees, integrated Masters, postgraduate taught and PhD opportunities. The link between teaching and research manifests itself in enhanced 'hands-on' research opportunities for our students.

Students can choose one of our undergraduate programmes and take all modules as directed below – due to timetabling restrictions we are not able to offer combinations of modules across different courses and years so **students should choose modules from one course and one level**. For a full year, the total credits must be 120.

If your home university requires you to take a Level 6 module alongside your Level 5 modules, we may be able to accommodate this, but it cannot be guaranteed and a 'back up' Level 5 should be chosen too.

It is not possible to change your module once you have started at NTU.

In case of a timetable clash we may ask you to choose an alternative module/s.

Full Academic Year Modules:

Please choose one degree programme and one level (120 credits).

Level	Degree	Module Title	NTU Credits
5	BSc (H) Biomedical Science – BIOL004	Clinical Biochemistry – BIOL22041	20
		Metabolism and its Control – BIOL22071	20
		Biomolecular Structure & Function – BIOL22081	20
		Immunopharmacology – BIOL22111	20
		Clinical & Public Health Microbiology – BIOL22221	20

		Biomedical Science in Practice – BIOL24521	20
6	BSc (H) Biomedical Science – BIOL004	Research Project – BIOL30001	40
		Immunology and Virology – BIOL33171	20
		Infectious Diseases and their Control – BIOL33361	20
		Haematology & Transfusion Practice – BIOL33451	20
		Cellular Pathology – BIOL33471	20
5	BSc (H) Microbiology – BIOL043	Professional Skills in Microbiology – BIOL20321	20
		Clinical and Public Health Microbiology – BIOL22221	20
		Microbial Metabolism and Genetics – BIOL22261	20
		Host-Pathogen Interactions – BIOL22271	20
		Microbiology Structure, ID and Dist – BIOL22321	20
		Applied Microbiology – BIOL22371	20
6	BSc (H) Microbiology – BIOL043	Research Project – BIOL30001	20
		Immunology and Virology – BIOL33171	20
		Infectious Diseases and their Control – BIOL33361	20
		Molecular Microbiology – BIOL33391	20
		Forensic Microbiology – BIOL333521	20
5	BSc (H) Biochemistry – BIOL061	Molecular Bioscience in Practice – BIOL22011 - Compulsory	20
		Clinical Biochemistry – BIOL22041 - Compulsory	20

		Metabolism and its Control – BIOL22071 - Compulsory	20
		Biomolecular Structure and Function – BIOL22081 - Compulsory	20
		Advanced Biochemistry – BIOL25012 - Compulsory	20
		Chemistry of Cancers and Infections – BIOL22141	20
		Molecular Genetics of Human Diseases – BIOL25013	20
6	BSc (H) Biochemistry – BIOL061	Research Project – BIOL30001- Compulsory	40
		Cell Signalling and Cancer – BIOL33111- Compulsory	20
		Applied Bioinformatics – BIOL33221 - Compulsory	20
		Global Challenges in Health – BIOL34013- Compulsory	20
		Toxicology – BIOL33211	20
		Evolutionary Biology and Genetics – BIOL34016	20
5	BSc (H) Pharmacology – BIOL069	Immunopharmacology – BIOL22111 – Compulsory	20
		Pathophys of Chronic Diseases – BIOL22122 – Compulsory	20
		Chemistry of Cancers and Infections – BIOL22141 – Compulsory	20
		Drugs of Addiction and Abuse – BIOL24511 - Compulsory	20
		Neuroscience – BIOL22151	20
		Physiology – BIOL22161	20
6	BSc (H) Pharmacology – BIOL069	Research Project -BIOL30001- Compulsory	40
		Current Topics in Pharmacology – BIOL33141 – Compulsory	20

		Clinical Pharmacology – BIOL33201 – Compulsory	20
		Toxicology – BIOL33211- Compulsory	20
		Current Topics in Neuroscience – BIOL33131	20
		Current Topics in Physiology – BIOL33151	20
5	BSc (H) Biological Sciences – BIOL082	Professional Skills for Bio Scientists 1 – BIOL20001 - Compulsory	20
		Professional Skills for Bio Scientists 2 – BIOL20002 - Compulsory	20
		Bio Scientists of the Future – BIOL20003 - Compulsory	20
		Biomolecular Structure and Function – BIOL22081 - Compulsory	20
		Choose one of the following options:	
		Host-Pathogen Interactions – BIOL22271	20
		Neuroscience – BIOL22151	20
		Molecular Genetics of Human Diseases – BIOL25013	20
		Ecosystems – BIOL20004	20
		Choose one of the following options:	
		Microbial Structure Identification & Distribution – BIOL22321	20
		Physiology – BIOL22161	20
		Metabolism and its Control – BIOL22071	20
		Biodiversity and Evolution – BIOL20005	20
6		Research Project – BIOL30001 - Compulsory	40

	BSc (H) Biological Sciences – Biochemistry & Microbiology – BIOL129	Cell Signalling and Cancer – BIOL33111- Compulsory	20
		Applied Bioinformatics – BIOL33221 - Compulsory	20
		Molecular Microbiology – BIOL33391 - Compulsory	20
		Immunology and Virology – BIOL33171	20
		Forensic Microbiology – BIOL33521	20
6	BSc (H) Biological Science – Biomedical Sciences – BOIL130	Research Project – BIOL3001 - Compulsory	40
		Cell Signalling and Cancer – BIOL33111 - Compulsory	20
		Immunology and Virology – BIOL33171 - Compulsory	20
		Please choose one of the following options:	
		Applied Bioinformatics – BIOL33221	20
		Haematology & Transfusion Practice – BIOL33451	20
		Please choose one of the following options:	
		Infectious Diseases and their Control – BIOL33361	20
		Cellular Pathology – BIOL33471	20
6	BSc (H) Biological Sciences – Environmental Biology – BIOL132	Research Project – BIOL30001 - Compulsory	40
		Current Topics in Pharmacology – BIOL33141 - Compulsory	20
		Current Topics in Physiology – BIOL33151 - Compulsory	20
		Clinical Pharmacology – BIOL33201 - Compulsory	20
		Please choose one of the following options:	

		Toxicology – BIOL33211	20
		Current Topics in Neuroscience – BIOL33131	20
6	BSc (H) Biological Sciences – Environmental Biology – BIOL287	Research Policy – BIOL30001	40
		Environmental Management (Field Course 2)* - BIOL33401	20
		Atmospheric Pollution – BIOL33411	20
		Regulating Environmental Impacts – BIOL33481	20
		Evolutionary Biology and Genetics	20

**This module includes a week-long residential field course what will be held the week before the September Welcome Week.*

Level	Degree	Module Title	NTU Credits
5	BSc (H) Chemistry – CHEM074	Organic Chemistry – CHEM20521 – Compulsory	20
		Inorganic Chemistry – CHEM20531 – Compulsory	20
		Physical Chemistry – CHEM20541 – Compulsory	20
		Analytical Chemistry – CHEM20551 – Compulsory	20
		Professional Practice – CHEM20561 – Compulsory	20
		Modern Day Materials – CHEM20221	20
		Pharmaceutical Chemistry – CHEM20251	20
		Applied Instrumental Analysis – CHEM20262	20
6	BSc (H) Chemistry – CHEM074	Research Project – CHEM30316 - Compulsory	40
		Advanced Chemistry – CHEM30320 – Compulsory	20

		Please choose one of the following options:	
		Advanced Organic Chemistry – CHEM30302	20
		Advanced Inorganic Chemistry – CHEM30303	20
		Advanced Physical Chemistry – CHEM30304	20
		Please choose one of the following options:	
		Advanced Chemical Analysis – CHEM30306	20
		Chemotherapeutics - CHEM30309 <i>Must have pre-requisite knowledge of Pharmaceutical Chemistry</i>	20
		Nano and Green Technology – CHEM30309	20
5	BSc (H) Medicinal Chemistry – CHEM091	Pharmaceutical Chemistry – CHEM20251	20
		Organic Chemistry – CHEM20521	20
		Inorganic Chemistry – CHEM20531	20
		Physical Chemistry – CHEM20541	20
		Analytical Chemistry – CHEM20551	20
		Professional Practice – CHEM20561	20
6	BSc (H) Medicinal Chemistry – CHEM091	Project – CHEM30316 - Compulsory	40
		Advanced Organic Chemistry – CHEM30302 - Compulsory	20
		Advanced Chemistry – CHEM30310 - Compulsory	20
		Advanced Medicinal Chemistry – CHEM30320 - Compulsory	20
		Advanced Chemical Analysis – CHEM30306	20

		Nano and Green Technology – CHEM30309	20
--	--	---------------------------------------	----

Semester One Modules (September to January) for Maths:

Please choose 60 credits worth of modules from one course and one level.

Level	Module Code	Module Title	NTU Credits
5	MATH28011	Numerical Methods for Ordinary Differential Equations	10
	MATH28021	Differential Equations	10
	MATH28031	Probability and Statistical Inference	10
	MATH28061	Discrete-Time Financial Mathematics	10
	MATH28071	Quality Control for Business	10
	MATH28091		10
6	MATH38011	Applied Statistics	10
	MATH38031	Numerical Analysis	10
	MATH38051	Stochastic Processes	10
	MATH38061		10
	MATH38071	Analytical Methods for PDEs	10
	MATH38091	Statistical Modelling of Medical Data	10
	MATH38111	Graph Theory	10
7	MATH48012	Quantum Computation	10
	MATH48031	Computational Statistics	10

	MATH48051	Differential Equations in Biology	10
	MATH48071	Mathematical Recipes	10

Semester Two Modules (January to May) for Maths:

Please choose 60 credits worth of modules from one course and one level.

Level	Module Code	Module Title	NTU Credits
5	MATH28081	Mathematical Modelling for Business	10
6	MATH38021	Applied Statistics 2	10
	MATH38041	Dynamical Systems	10
	MATH38081	Numerical Methods for PDEs	10
	MATH38101	Statistical Modelling of Financial Data	10
	MATH38122		10
7	MATH48041	Statistical Data Analysis	10
	MATH48061	Networks in Biology	10

Full Year Modules for Maths:

Please choose 120 credits worth of modules from one course and one level.

Level	Course	Module Title and Code	NTU Credits
-------	--------	-----------------------	-------------

5	BSc (H) Mathematics – MATH003	Linear Algebra and its Applications – MATH20301	20
		Numerical Methods for Ordinary Differential Equations – MATH20441	20
		Differential Equations and Modelling – MATH20452	20
		Probability and Statistical Inference – MATH20461	20
		Advanced Calculus – MATH20471	20
		Mathematical Enterprise – MATH20482	20
6	BSc (H) Mathematics – MATH003	Project in Mathematics – MATH30323 - Compulsory	20
		Professional Mathematical Skills – MATH30501 - Compulsory	20
		Please choose one of the following options:	
		Linear Systems – MATH30451	20
		Statistical Modelling – MATH30471	20
		Topics in Mathematical Biology – MATH34041	20
		Mathematical Recipes – MATH34051	20
		Please choose one of the following options:	
		Numerical Analysis and Dynamical Systems – MATH30411	20
		Stochastic Processes – MATH30421	20
		Quantum Computing and Cryptography	20
		Please choose one of the following options:	
		Differential and Integral Equations – MATH30261	20

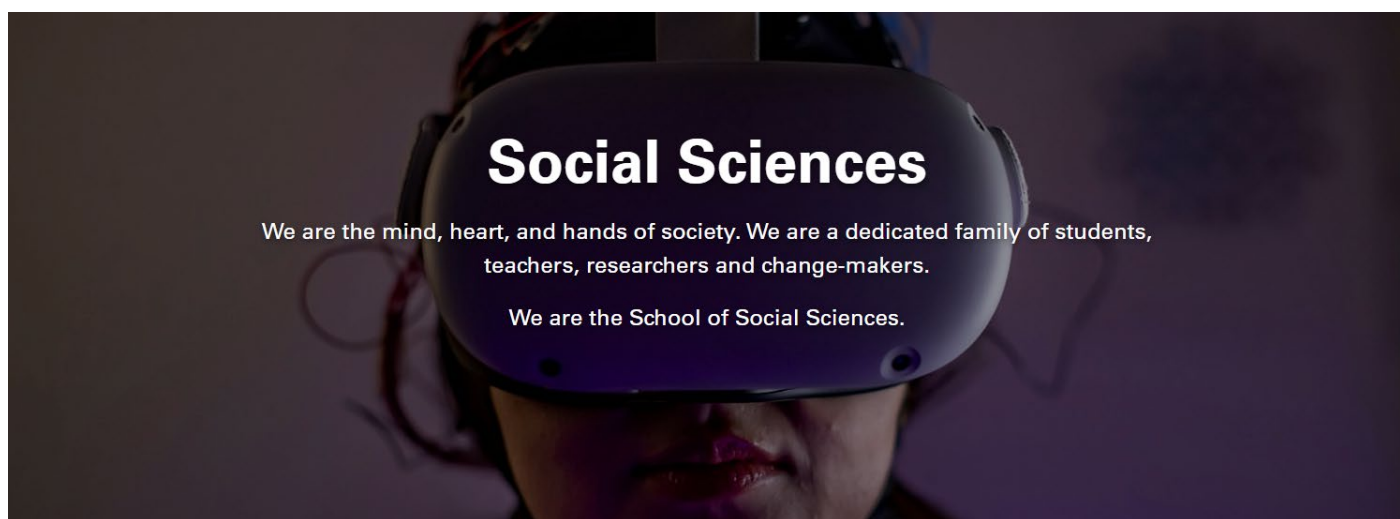
		Optimisation – MATH30511	20
7		Computational Statistics and Data Analysis – MATH34031	20
		Please choose one of the following options:	
6		Applied Statistics – MATH30301	20
		Partial Differential Equations – MATH30461	20
		Graph Theory and Combinatorics – MATH30481	20
5	BSc (H) Computer Science and Mathematics – MATH007	Mathematical Enterprise – MATH20482 - Compulsory	20
		Probability and Statistical Inference – MATH20461 - Compulsory	20
		Systems Software – COMP20081 - Compulsory	20
		Software Design and Implementation – SOFT20091 - Compulsory	20
		Please choose one of the following options:	
		Numerical Methods for Ordinary Differential Equations – MATH20441	20
		Differential Equations and Modelling – MATH20452	20
		Please choose one of the following options:	
		Applied Mathematics and Graphics – COMP20091	20
		Foundations in AI and Machine Learning -COMP20121	20
6	BSc (H) Computer Science and Mathematics – MATH007	Choose 40 credits from the following options:	
		Project in Computing – COMP30151	40
		Project in Mathematics – MATH30323	20

		Professional Mathematical Skills – MATH30501 – (must be taken with Project in Mathematics)	20
		Please choose one of the following options:	
		Linear Systems – MATH30451	20
		Statistical Modelling – MATH30471	20
7		Optimisation – MATH30511	20
		Computational Statistics and Data Analysis – MATH34031	20
6		Please choose one of the following options:	
		Applied Statistics – MATH30301	20
		Numerical Analysis and Dynamical Systems – MATH30411	20
		Stochastic Processes – MATH30421	20
7		Quantum Computing and Cryptography – MATH34022	20
6		Please choose one of the following options:	
		Graphics for Games and Dynamics Modelling – COMP30181	20
		Service Centric and Cloud Computing – COMP30231	20
		Artificial Intelligence – ISYS30221	20
		Advanced Analysis and Design – SOFT30121	20
		Please choose one of the following options:	
		Distributed Database Engineering – COMP30261	20
		Mobile Platform Applications – ITEC31041	20

		Advanced Software Engineering – SOFT30161	20
5	BSc (H) Financial Mathematics – MATH015	Numerical Methods for Ordinary Differential Equations – MATH20441	20
		Differential Equations and Modelling – MATH20452	20
		Probability and Statistical Inference – MATH20461	20
		Discrete-Time Financial Mathematics – MATH20493	20
		Mathematical Modelling and Quality Control for Business – MATH20501	20
		Mathematical Enterprise – MATH20482	20
6	BSc (H) Financial Mathematics – MATH015	Project in Mathematics – MATH30323	20
		Continuous-Time Financial Mathematics – MATH30431	20
		Professional Mathematical Skills – MATH30501	20
		Please choose one of the following options:	
		Linear Systems – MATH30451	20
		Statistical Modelling – MATH30471	20
7		Optimisation – MATH30511	20
		Computational Statistics and Data Analysis – MATH34031	20
6		Please choose one of the following options:	
		Numerical Analysis and Dynamical Systems – MATH30411	20
		Stochastic Processes – MATH30421	20
		Quantum Computing and Cryptography – MATH34022	20

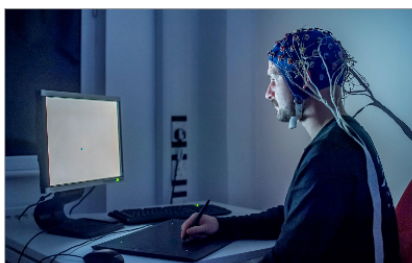
Please choose one of the following options:	
Applied Statistics – MATH30301	20
Graph Theory and Combinatorics – MATH30481	20
Investment and Portfolio Management -FINS30121	20

School of Social Sciences



Department of Criminology and Criminal Justice

Criminology and Criminal Justice at NTU centres around engagement with communities and the criminal justice system. Its work reflects the University's wider commitment to transforming people's lives and creating opportunities.



NTU Psychology

With over 150 academic experts with knowledge and experience across the breadth of the discipline, NTU Psychology is one of the largest departments in the UK. We are proud to provide a friendly and collegiate environment dedicated to providing a productive space for our students and our staff to achieve their full potential and succeed in their ambitions.



Department of Social and Political Sciences

The Department of Social and Political Sciences provides a vibrant and close-knit academic community for both staff and students. A progressive, sector-leading approach to the study of politics and international relations, encourages student involvement in both traditional and practical forms of learning, and provides a host of co-curricular opportunities for development.

If you are joining NTU for a full academic year you will need to choose 120 credits worth of modules, if you are joining for a semester, you will need to choose 60 credits.

Students able to choose modules from across subject areas, however you are responsible for checking any pre-requisite study needed.

Please note that there may be timetabling restrictions which will require you to change one or more modules before you arrive in Nottingham.

Please contact SOC.Exchange@ntu.ac.uk to confirm the modules that you'd like to study.

Full Year Modules:

Please choose 120 credits worth of modules.

Level	Subject Area	Module Title	NTU Credits
5	Criminology and Criminal Justice	Crime Reduction and Community Safety	20
		Explaining Crime	20
		Managing Justice	20
		Advanced Crime Research	20
5	Politics and International Relations	Global Political Economy and Everyday Life	20
		The Politics of Art, Film, and Literature	20
		Understanding Foreign Policy	20
		Security Studies	20
		The Global Politics of Postcolonialism	20
		Global Political Marketing	20
		Environmental Politics and Policy	20
		Contemporary European Politics	20
		Justice, Ethics, and Democracy	20

6		UK Parliamentary Studies	20
		Political Violence and Terror	20
		The International Relations of the Middle East and North Africa	20
		States, Nationalism, and Identity	20
		Post Soviet Geo Politics	20
		Emerging Powers of Asia	20
		Interpreting Contemporary Politics	20
		American Politics and Government	20
		British Politics in Uncertain Times	20
		The Global Politics of Pop Culture	20
		Feminist Theory	20
5	Sociology	Constructing Modern Societies	20
		Sustainable Futures	20
		Applied Social Research	20
		Sociology of Consumption	20
		The Body of Society	20
		Sociology of Education	20
		Politics of Social Justice	20
		Gender, Sex and Sexuality	20

6		Theorising Contemporary Society	20
		'Race', Culture and Society	20
		Sociology of Work and Career	20
		Digital Culture and Society	20
6	Psychology	Contesting Mental Illness: The Psychology of Distress	20
		Mind Reading and Mind Control	20
		Health Psychology of Chronic Illness	20
		Cyberpsychology	20
		The Psychology of Religion	20
		Occupational Psychology	20
		Gender, Identity and Body Image	20
		Personality, Personality Disorders, and Violence	20
		Psychology in the Criminal Justice System	20
		Psychology of Criminal Behaviour	20
		Psychopathology	20
		Psychology of Sex	20
		Professional Practice in Psychology	20
		Advanced Biological and Cognitive Psychology	20
		Advanced Social and Developmental Psychology	20

5		Cognitive and Biological Psychology	20
		Social and Developmental Psychology	20

Semester One Modules (September to January):

Please choose 60 credits worth of modules.

Level	Subject Area	Module Title	NTU Credits
5	Criminology and Criminal Justice	Crime Reduction and Community Safety	10
		Explaining Crime	10
		Managing Justice	10
		Advanced Crime Research	10
6		Race Crime and Empire	20
		Cultural Criminology in the Global Perspective	20
		Media and Crime	20
		Gender and Crime	20
		5	Global Political Economy and Everyday Life
The Politics of Art, Film, and Literature	10		
Understanding Foreign Policy	10		
Security Studies	10		
The Global Politics of Postcolonialism	10		
Global Political Marketing	10		

		Environmental Politics and Policy	10
		Contemporary European Politics	10
		Justice, Ethics, and Democracy	10
		UK Parliamentary Studies	10
5	Sociology	Constructing Modern Societies	10
		Sustainable Futures	10
		Applied Social Research	10
		Sociology of Consumption	10
		The Body in Society	10
		Sociology of Education	10
		Politics and Social Justice	10
		Gender, Sex and Sexuality	10
6		Theorising Contemporary Society	10
		'Race', Culture and Society	10
		Digital Culture and Society	10
6	Psychology	The Psychology of Social Realities	20
		The Psychology of Sleep	20
		The Psychology of Ageing and Neurodegenerative Disease	20
		Person Perception	20

		Psychology of the Family	20
		Psychology of the Paranormal	20
		Evolutionary Psychology	20
		Statistics III: Advanced Statistics for Research	20
		Community, Health and Applied Social Psychology	20
		Psychology, Educational Support Needs and Inclusion	20
		Biological Perspectives on Mental Health and Wellbeing	20
		Motivation in Education	20
		The Psychology of Mindfulness	20
		Politics, Ideology and Moral Psychology	20
5		Social and Cognitive Psychology 2	20

Semester Two Modules (January to May):

Please choose 60 credits worth of modules.

Level	Subject Area	Module Title	NTU Credits
5	Criminology and Criminal Justice	Crime Reduction and Community Safety	10
		Explaining Crime	10
		Managing Justice	10
		Advanced Crime Research	10
6		Young People Crime and Justice	20

		Hate Crime, Identity and Citizenship	20
		Drugs, Crime and Justice	20
		Inequality, Crime and Justice	20
5	Sociology	Constructing Modern Societies	10
		Sustainable Futures	10
		Applied Social Research	10
		Sociology of Consumption	10
		The Body in Society	10
		Sociology of Education	10
		Politics and Social Justice	10
		Gender, Sex and Sexuality	10
		Theorising Contemporary Society	10
		'Race', Culture and Society	10
		Digital Culture and Society	10
6	Psychology	Clinical Neuropsychology	20
		Language and Literacy in Infants and Children	20
		Social Development in Children and Adolescents	20
		Psychology of Sex Offending	20
		Psychopathology and Offending Behaviour	20

5		Psychology of Trauma	20
		Sport and Exercise Psychology	20
		The Social Brain	20
		Biological and Developmental Psychology	20

Nottingham Institute of Education

Nottingham Institute of Education

At Nottingham Institute of Education, it's the people that make us. We are a community — learning from and supporting each other to make a positive difference in society.

Designed and delivered to prepare you for your future career, our education, teacher training and childhood courses are innovative, hands-on, and career-focused.

Together, we inspire, we empower, and we impact.



Semester One Modules (September to January):

Please choose 3 modules (60 credits).

Level	Module Code	Module Title	NTU Credits
4	EDUC17019	Outdoor Learning	20
5	EDUC24336	Social Development in Children & Adolescence	20
5	EDUC24338	Disability & Society	20
5	EDUC24339	Meaningful Movement	20
Only one of the following two modules can be selected as they are scheduled at the same time			
5	EDUC24324	Learning through Arts & Culture	20
5	EDUC24327	Navigating the Classroom	20
6	EDUC TBC	Social Justice in Education	20
6	EDUC TBC	The Psychology of Educational Support and Therapy	20

Semester Two Modules (January to May):

Please choose 3 modules (60 credits).

Level	Module Code	Module Title	NTU Credits
5	EDUC24331	Inclusive Education and Practice	20
5	EDUC24334	Lifelong Learning in Education	20
5	EDUC24341	Inclusive Education in a Global World	20
5	EDUC24342	Inclusion in Practice	20
Only one of the following two modules can be selected as they are scheduled at the same time			
5	EDUC24330	Comparative & International Education	20
5	EDUC24329	Sociology of Education	20
6	EDUC TBC	Education and Digital Technology	20
6	EDUC TBC	Embedding inclusive leaderful practice	20
6	EDUC TBC	Improving Language and Literacy in Schools	20